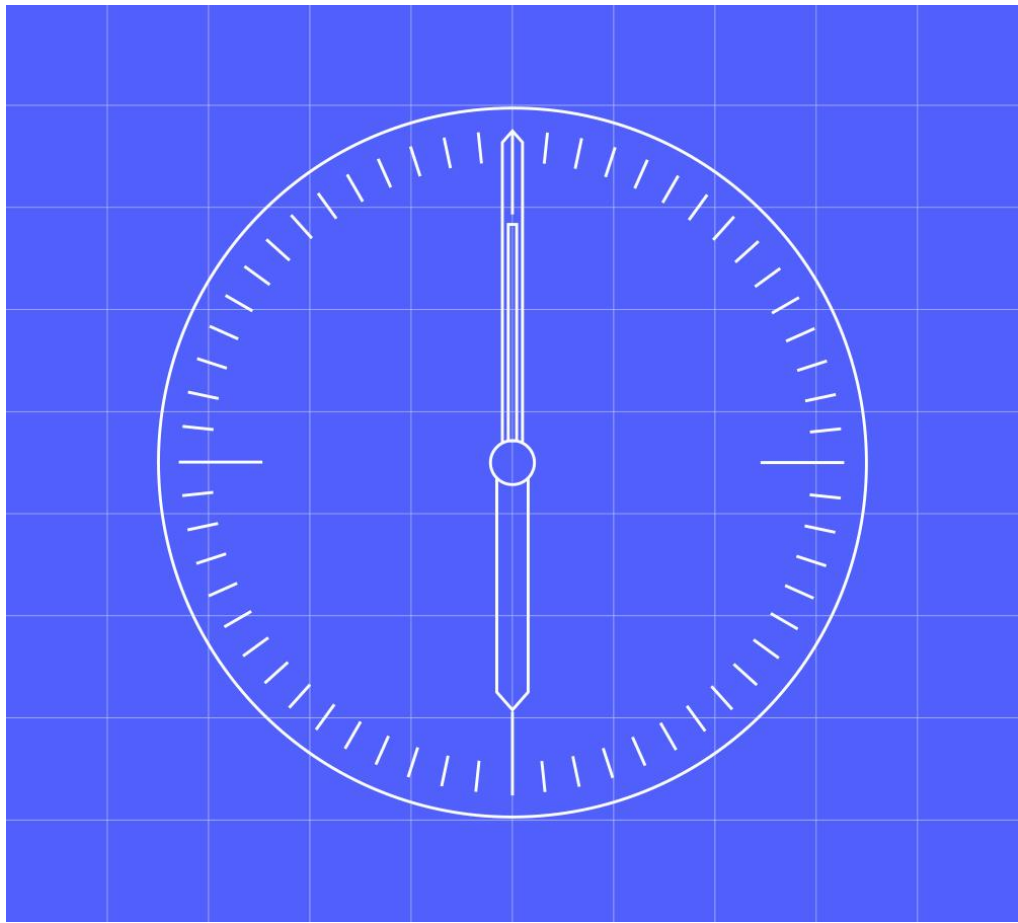


MHHS TOM – End-to-End Solution Architecture



Document owner	Document number	Version	Status:	Date
MHHS DAG	MHHS-E2E001	Version 3.6.176	Design Updates	426th April January 2024

1 Contents

1 Contents	12
1.1 Change Record	32
1.2 Reviewers	33
1.3 References	33
1.4 Terminology	54
2 Introduction	65
2.1 Background	66
2.2 Objective	66
2.3 Assumptions	66
2.4 Risks	66
2.5 Document Scope	66
3 MHHS TOM - Functional Architecture	87
3.1 Key Assumptions/Principles	88
3.2 MHHS TOM - Scope	88
3.3 MHHS TOM - Actors/Services	88
3.4 MHHS TOM - Workflows	1242
3.5 MHHS Message/Event Channel Instances	2524
3.6 Actor Workflows Summary	2624
4 Messaging Architecture	2826
4.1 Logical View	2827
4.2 Message/Event Channel	2928
4.3 DIP Processing	3533
4.4 Send Messages API	3634
4.5 Message Compression Handling	4542
4.6 Receive Messages Webhook	4643
4.7 Send Status Messages API	5350
4.8 Receive Status Messages Webhook	5351
4.9 Replay Events	5551
5 Message Choreography	5653
5.1 Simple Message Exchange	5653
5.2 Error Handling & Message Distribution Patterns	6761
5.3 Batch Message Handling	6863
5.4 Workflow Message Handling	6863
6 Message Volume and Submission Patterns	7265
6.1 Half-Hourly Consumption Data (IF-021)	7266
7 Message Auditing	7266

Formatted: TOC 1, Tab stops: 0.77 cm, Left + 18.6 cm, Right, Leader: ...

Formatted: TOC 2, Tab stops: 1.16 cm, Left + 18.6 cm, Right, Leader: ...

Formatted: TOC 1, Tab stops: 0.77 cm, Left + 18.6 cm, Right, Leader: ...

Formatted: TOC 2, Tab stops: 1.16 cm, Left + 18.6 cm, Right, Leader: ...

Formatted: TOC 1, Tab stops: 0.77 cm, Left + 18.6 cm, Right, Leader: ...

Formatted: TOC 2, Tab stops: 1.16 cm, Left + 18.6 cm, Right, Leader: ...

Formatted: TOC 1, Tab stops: 0.77 cm, Left + 18.6 cm, Right, Leader: ...

Formatted: TOC 2, Tab stops: 1.16 cm, Left + 18.6 cm, Right, Leader: ...

Formatted: TOC 1, Tab stops: 0.77 cm, Left + 18.6 cm, Right, Leader: ...

Formatted: TOC 2, Tab stops: 1.16 cm, Left + 18.6 cm, Right, Leader: ...

Formatted: TOC 1, Tab stops: 0.77 cm, Left + 18.6 cm, Right, Leader: ...

Formatted: TOC 2, Tab stops: 1.16 cm, Left + 18.6 cm, Right, Leader: ...

Formatted: TOC 1, Tab stops: 0.77 cm, Left + 18.6 cm, Right, Leader: ...

8	Technical Architecture	7366
8.1	Open API Design (Swagger)	7367
8.2	Privacy & Security	7367
8.3	Performance	7367
8.4	Connection Patterns	7367
8.5	Version Control	7568

Formatted: TOC 2, Tab stops: 1.16 cm, Left + 18.6 cm, Right, Leader: ...

1.1 Change Record

Date	Author	Version	Change Detail
26 May 2022	RG	0.1	First draft
1 August 2022	RG	0.2	Updated after first review
23 September 2022	RG	1.3	Updates after latest round of industry reviews and design clarification. Key updates: <ul style="list-style-type: none"> Remove Sender Envelope Reference Format of Sender Unique Reference is mandated
31 October 2022	RG	2.0	DAG Approval
10 November 2022	RG	2.1	Minor updates
19 December	RDG	2.2	Minor updates
?		2.3	
3 February 2023	RDG	2.4	Minor updates to align with other changes in the interfaces
		3	DAG Sign-off
20 March 2023	RDG	3.1	Minor updates for mandatory null issue & API end points and other clarifications coming through from detailed design
30 May 2023	RDG, RT	3.1.1	Minor corrections following review
08 Jun 2023	RDG, RT, SW	3.2	DIN-250, DIN-270, DIN-282, DIN-284, DIN-289 DIN-374, DIN-375
27 th June 2023	RDG, RT, SW	3.3	DIN 470
27 th July 2023	RDG, RT, SW	3.4	DIN-503, 552, DIN-487, 485
26 th Sept 2023	SC, RDG, SW	3.5	DIN-590, 603, 670, 484, 490, 544, 592, 683
27 th Nov 2023	SW	3.5.1	DIN-798
15 th Jan 2024	SW	3.5.2	DIN-860
30 th Jan 2024	SW, RG	3.6	DIN-799, 807, 836, 844 (Inclusion of MDR role, support for IR7), 861, 867 & 871.
4 th April 2024	RG	3.6.17	DIN-900

Formatted: Superscript

1.2 Reviewers

Reviewer	Role
TDWG	Review (first draft)
MHHS Program Parties	Review (second draft)
DAG	For information and sign off

1.3 References

Document/Link	Publisher	Published	Additional Information
MHHS Programme Governance Framework - (Strawman)	MHHS	v1.0	
The Target Operating Model for Market-wide Half Hourly Settlement - Design Working Group's Recommendation to Ofgem	Elexon	V1.1	12 February 2019
MHHS AWG Recommendation	Elexon	v1.0	22 April 2021
MHHS Risk and Management Process	MHHS	v0.1	August 2021 – in preparation
MHHS Architecture Principles	MHHS	V1.0	June 2022

MHHS End-to-End Security Architecture	MHHS	V1.0	
MHHS-DIP001-DIP Functional Specification	MHHS	V2.2	August 2022
MHHS-DIP002-Non-Functional Requirements	MHHS	V2.1	April 2022
MHSP-DES138-Interface Catalogue	MHHS	V5.7.26-4	Physical Interface Specifications
MHHS-E2E002-Requirements	MHHS	V3.22.2	End-to-End Requirements

1.4 Terminology

Term	Description
ARP	Advanced Retrieval and Processing Service
AWG	Architectural Working Group
BSCCo	Balancing and Settlement Code Company (Elexon Limited)
COS	Change of Supplier
DEV	Development
DIP	Data Integration Platform
DIPSP	DIP Service Provider
DCC	Data Communications Company
DNO	Distribution Network Operator
DPIA	Data Protection Impact Assessment
DTN	Data Transfer Network
DTS	Data Transfer Service
DWG	Design Working Group
ECOES	Electricity Central Online Enquiry Service
ESO	Enduring Service Owner, i.e. the party with overall responsibility for the DIP
EDA	Event-Driven Architecture
HHR	Half Hour
HHS	Half-Hourly Settlement
HTTP	Hypertext Transfer Protocol
iDNO	Independent Distribution Network Operator
ISD	Industry Standing Data
JSON	JavaScript Object Notation
LDSO	Licensed Distribution System Operator
LSS	Load Shaping Service
MDR	Meter Data Retrieval Service
MDS	Market-wide Data Service
MHHS	Market-Wide Half-Hourly Settlement
MPAN	Metering Point Administration Number
MRS	Meter Reading Service
MSA	Metering Service (Advanced)
MSS	Metering Service (Smart)
mTLS	Mutual Transport Layer Security
Obo	On Behalf Of
PRE-PROD	Pre Production
PROD	Production
PSS	Processing Service (Smart)
RECCo	Retail Energy Code Company (Retail Energy Code Limited)
RFP	Request for Proposal
SD	Settlement Day
SDS	Smart Data Services
SIT	System Integration Test
REGS	Registration Service
SP	Settlement Period
SUP	Supplier
SUR	Sender Unique Reference
SVA	Supplier Volume Allocation
SWIKI	Switching Public Key infrastructure
TLS	Transport Layer Security
TOM	Target Operating Model
UIT	User Integration Test
UMSDS	Unmetered Supplies Data Service
UMSO	Unmetered Supplies Operator Service
VAS	Volume Allocation Service

2 Introduction

2.1 Background

Since 2018 Ofgem has hoped that Half-Hourly Settlement (HHS) on a market-wide basis would be introduced into the UK electricity market. A cross-industry Design Working Group (DWG) was established to understand the feasibility of HHS and how it could be delivered. The DWG produced a Target Operating Model (TOM) that outlines the new ways of working which could deliver HHS into the market (*Reference Target Operating Model for Market-wide Half Hourly Settlement*).

In conjunction with the DWG, and Architectural Working Group (AWG) was established to propose an IT architecture that could support the business process outlined in the TOM. The AWG recommendation was that an Event-Driven Architecture (EDA) be implemented (*Reference MHHS AWG Recommendation*). Hence, a new message orientated/event-driven middleware component is required – the Data Integration Platform (DIP) - to support the flow of events/messages between industry participants proposed by the EDA.

On the back of this work the MHHS Programme was established to create a durable, faster, more accurate settlement process for all market participants, enabling broad change across the electricity industry.

The MHHS programme has refined the original TOM. The final TOM defines a set of services required to deliver Settlement Period (SP) data from a Meter to a central Settlement body to enable the calculation of the amount of energy that the electricity Supplier's customers have consumed (or exported) in each Settlement Period for each Settlement Day (SD). This calculation is then used in the Imbalance Settlement process, which compares the Supplier's contracted purchases of energy to the amounts deemed to have been consumed (sales) by each of the Supplier's customers (and recognises any amounts of energy contracted by National Grid under the Balancing Mechanism). Settlement Data is also provided for network charging.

In addition to these core services, a number of supporting services need to be established to ensure the smooth running of the electricity market with the move to market-wide half-hour metering.

2.2 Objective

This document describes the end-to-end solution architecture that will support the proposed MHHS TOM and provides a description of how the different actors within the MHHS landscape interact.

2.3 Assumptions

The end-to-end design has the following assumptions:

1. The choice of the underlying platform to support the DIP message/event processing will not have a consequential effect on the end-to-end design
2. The DIP is not responsible for orchestrating business process, e.g. ensuring correlated message exchanges occur.
3. The End-to-End Architecture Security requirements are covered in *MHSP-DIP005-E2E Security Requirements*.

2.4 Risks

The document is prepared with the following prevailing risks:

1. Currently none

2.5 Document Scope

The scope of the document includes

- An overview of the different MHHS Actors and Roles;
- An overview of the MHHS Workflows/business processes:
- A description of the message architecture including:
 - Message formats
 - Message orchestration
- A view of the requirements to deliver the end-to-end solution:
 - Participant responsibilities
 - DIP responsibilities

The document provides a narrative for the detailed requirements for the e2e solution architecture that can be found in the accompanying spreadsheet (*Reference MHHSP-DIP009-E2E Requirements, April 2023*).

Participants need to use this document as well as the following in order to understand the full impact that the MHHS TOM will have on their electricity market IT systems:

The document does not cover the following areas:

- Participant on-boarding
- DIP Reporting

3 MHHS TOM - Functional Architecture

3.1 Key Assumptions/Principles

The following are the key design assumptions when establishing the message flows within the MHHS TOM:

1. The DIP will broker new message flows between Market Participants supporting the business process underpinning the MHHS TOM, i.e. there are no direct point-to-point interfaces between participants.
2. Some of the reworked existing business processes falling under the programme's scope have existing data flows that use the DTN, and these will be retained where there is no change to that interface. When a MHHS initiated change to a DTN flow is required then each change is considered on an individual case-by-case basis as to whether the DTN flow is reworked or re-implemented in the DIP.

3.2 MHHS TOM - Scope

The scope of the MMHS work covers the "Meter to Bank" process for all Supplier Volume Allocation (SVA) Settlement Meters – i.e., all Settlement Meters connected to distribution networks. The business architecture is described as a set of services, with each service defined by a set of requirements and processes required to deliver one function of MHHS.

A service is agnostic of current organisation roles (such as Supplier, Meter Operator, Data Collector, Data Aggregator).

The list of services includes:

- Registration Service - the recording the ownership of supply points and other details information pertinent to Settlement Metering Systems;
- Metering Service - fitting and maintaining Settlement Meters;
- Data Retrieval - getting information from Settlement Meters;
- Data Processing (Data Services) – validating and estimating Settlement Meter data;
- Smart Metering Data Service Provider, i.e. the DCC
- Load Shaping Service – settlement service use to produce Load Shaping data
- Data Aggregation - summing Settlement Meter data to required granularity; and
- Volume Allocation – allocating Meter volumes to Trading Parties' signatories to the BSC.
- Supplier – energy supplier in the retail market
- Messaging Service – passes messages between other services, i.e. the DIP, DTS.
- Electricity Enquiry Service.

3.3 MHHS TOM - Actors/Services

A few different roles and Users (Market Participants) have been identified. Those actors that are active within the DIP are marked *:

Role ID	DIP Active	Service Name	Market Segment/Role	Market Participant Role
MSA	*	Metering Service (Advanced)	Advanced Market Segment	T
ADS	*	Advanced Data Service		O

MSS	*	Metering Service (Smart)	Smart and Traditional (non-Smart) Market Segments	S
MRS		Metering Reading Service		6
SDS	*	Smart Data Service		N
MDR	* ¹	Meter Data Retrieval Service		
UMSO	*	Unmetered Supplies Operator Service	Unmetered Supplies Market Segment	3
UMSDS	*	Unmetered Supplies Data Service		Q
MDS	*	Market-wide Data Service	BSC Central Settlement (CS)	n/a
LSS	*	Load Shaping Service		n/a
ISD	*	Industry Standing Data		n/a
VAS	*	Volume Allocation Service		n/a
REGS	*	Registration Service		Registration
SUP	*	Supplier	Supplier	X
MAP		Meter Asset Provider		8
LDSO	*	Licensed Distribution System Operator (IDNOs & DNOs)	Distribution Network Operator	R
EES	*	Electricity Enquiry Service	RECCo	L
CSS		Central Switching Service	Messaging/Orchestration Service	
DCC		Data Communication Company		
DTS		Data Transfer Service		
DIP		Data Integration Platform		
DCP	*	DIP Connection Provider		

Some of these different roles have the capacity to operate within several different contexts for each the TOM business processes, for example a Supplier within a business process can act as the incumbent supplier, or be a previous or future supplier. Where the separation of the roles into different contexts is required this is described in the corresponding business process diagrams and summarised below.

¹ CR023 introduced the MDR as an active service within the DIP

3.3.1 Supplier (SUP)

The Supplier are responsible for supplying electricity to the end customer identified by the customer's MPAN. The Supplier is responsible for migrating MPANs from the current settlement into the MHHS arrangements.

3.3.2 Metering Service (MSA & MSS)

The principal functions of a Metering Service (Smart (MSS) and Advanced (MSA)) are to install, commission, test, maintain, rectify, energise and remove faults in respect of Metering Equipment (including, where applicable, associated Communications Equipment). The MSS and MSA will also maintain and make available Meter asset information and, where required, Meter configuration information.

3.3.3 Data Service (SDS & ADS)

The Data Services are responsible for data retrieval, validation, and submission of consumption data into Settlements. The Smart Data Service (SDS) will support Smart and Traditional meters, with the Advanced Data Service (ADS) supporting Advanced Meters. Both Data Services will remotely recover data from their respective meter populations, making arrangements for manual readings where remote connection is not possible. The Service Request type and schedule are provided by the Processing Service (PSS) for each Metering Point Administration Number (MPAN) which is under the responsibility of the PSS.

3.3.4 Meter Data Retrieval Service (MDR)

The Meter Data Retrieval (MDR) Service is really a sub-component of the Smart Data Service (SDS). However, is called out here as it is a qualified party in its own right. The MDR will take specific responsibility for all interactions with the DCC, in terms of DCC Service Request management for access to Smart Meters. All data recovered or exceptions received will be passed back to the SDS for investigation and resolution. The MDR service has become a user of the DIP since the implementation of CR023 with the introduction of new message flows between the MDRs and other DIP services.

3.3.5 Unmetered Supplies Operator Service (UMSO)

The Unmetered Supplies Operator (UMSO) is responsible for validating the detailed unmetered supplies inventory data for equipment attached to its distribution network and providing information to other industry stakeholders. It interfaces with customers who own/operate the unmetered equipment (referred to as the Unmetered Supplies customer).

3.3.6 Unmetered Supplies Data Service (UMSDS)

The Unmetered Supplies Data Service (UMSDS) is responsible for calculating Settlement Period (SP) level consumption data for unmetered equipment, for example, streetlights and traffic signals.

3.3.7 Central Settlement (CS)

Central Settlement is the parent role undertaken by BSCCo (Elexon). It encompasses the child roles of MDS, LSS, ISD and VAS.

3.3.8 Market-wide Data Service (MDS)

The Market-wide Data Service (MDS) is responsible for processing Settlement Period level data from the Smart Data Service (SDS) for smart and non-smart Meters; and Advanced Data Service (ADS) for Advanced Meters; and Unmetered Supplies Data Services (UMSDS) for unmetered equipment. The MDS will provide data aggregations for Imbalance Settlement and other purposes (such as network charges and flexibility offerings (if required)).

3.3.9 Load Shaping Service (LSS)

The Load Shaping Service (LSS) is responsible for calculating energy consumption (import and export) Load Shapes for a number of defined categories of Metering Systems. The LSS uses validated actual Settlement Period (SP) level data accessed from the Data Services. The Data Services will then use the Load Shape data to convert Register Readings (RRs) or daily consumption values into SP level data. The Load Shape data will also be used to estimate invalid SP level data for Meters and default where data is missing or unavailable.

3.3.10 Volume Allocation Service (VAS)

The Volume Allocation Service (VAS) is responsible for accessing aggregated Settlement Period (SP) level data from the Market-wide Data Service (MDS); and SP level data (Grid Supply Point Group Takes) from the Central Data Collection Agent (CDCA). The VAS calculates SP level energy volumes for Balancing Mechanism Units (BMUs) using these two datasets. The data is processed for each Settlement Day in a scheduled run called a Volume Allocation Run (VAR). The processed BMU data is used in the Imbalance Settlement calculations. The VAS will also allocate or aggregate data for other purposes and provide a wide range of data reporting.

3.3.11 Industry Standing Data (ISD)

Industry Standing Data process is responsible for publishing Industry Standing Data. The process is owned and managed by the BSCCo. ISD can be downloaded from the Elexon portal on an ad-hoc basis, and updates will be notified by the DIP to Market Participants to an agreed timetable (monthly). It will replace the current D269 and D270 data flows.

3.3.12 Data Integration Platform (DIP)

The Data Integration Platform (DIP) is responsible for brokering messages between the different MHHS actors and services. The DIP performs the addressing and routing of messages between participants.

3.3.13 Registration Service (REGS)

The Registration Service is the LDSO service that holds Meter point standing data information about each MPAN within its distribution Region. Data includes the BRP the processing and metering services appointed to the MPAN. It also includes information on the type of customer, the Measurement Class, Energisation Status and Line Loss Factor Class. In the MHHS TOM the Registration Service will act as the definitive source of all settlement impacting data items. The Registration Service, leveraging its existing connectivity with the CSS (Central Switching Service) shall also provide the MHHS view of Supply Point ownership.

3.3.14 Data Transfer Service (DTS)

The DTS is the existing mechanism that is used to exchange information between participants in the UK utility markets. The DTS provides a managed file transfer service that allows market participants to share data efficiently and securely

to perform their roles in the market. The DTS service operates over the Data Transfer Network (DTN). Often the two terms are used synonymously.

Many of the workflows described below will use the data exchanges that the DTN orchestrates, and the DTN is considered similarly to the DIP.

3.3.15 Central Switching Service (CSS)

The CSS provides the capability for domestic consumers to change energy suppliers. Consumers are able to transfer data, payment details and account information within five working days, and will later be able to switch within 24 hours.

3.3.1 Electricity Enquiry Service (EES)

The Electricity Enquiry Service (EES) allows users to access market data where they are entitled to do so. Data is sourced from either the Supplier Meter Registration Service, or the Central Switching Service (CSS) and moving forward the DIP. The service consists of an on-line portal where the data for all electricity Registrable Measurement Points (RMPs) is available and API service which allows Enquiry Service User to gather information from the service in a specified manner.

3.3.2 DIP Connection Provider (DCP)

A DIP Connection Provider is a third-party who provides connectivity services to the DIP on behalf of DIP Participants. Some DIP Participants will not want to have a direct connection to the DIP and instead want to have this service undertaken by a DIP Connection Provider.

3.4 MHHS TOM - Workflows

The following section describes at a high level the initial list of workflows that the programme is aiming to deliver.

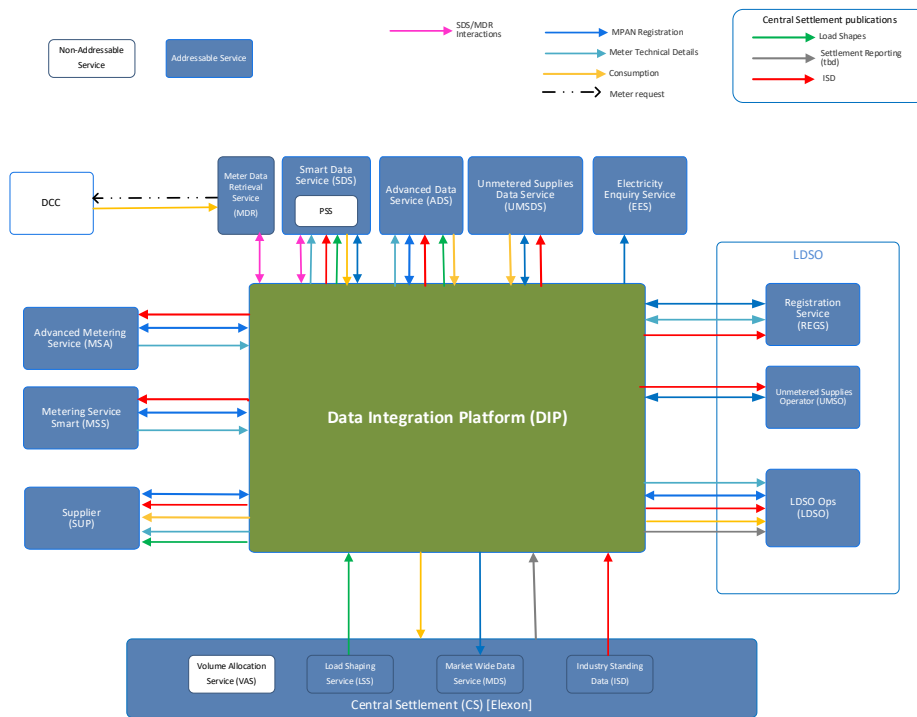


Figure 1 MHHS TOM Workflows

MHHS TOM landscape will be a distributed network of services and roles requiring constant data communication for operational purposes. There are approximately 27 Registration Services that will need to maintain operational data integrity and consistency across approximately 35 Data Services, 85 Metering Services, 17 DNO's and 60 Suppliers. In addition, the Data Services must provide an approximate total of 32 million daily (15 billion annual) consumption events to Central Settlement.

The MHHS TOM is divided in 6 different functional areas:

1. MPAN Registration
2. Consumption
3. Meter Technical Details
4. Load Shapes
5. Industry Standing Data (ISD)
6. Settlement Reporting
7. SDS/MDR Interactions

A summary of the business processes (workflows) orchestrated within the MHHS TOM, including the dataflows (interfaces) that need to be undertaken by the DIP, are provided below:

3.4.1 BP-001 Change of Supplier

BP-001	Change of Supplier
TOM Sector	Registration
Principal Actors	Supplier (Outgoing/Incoming) Registration Service (REGS) Central Settlements (CS)
Additional Actors	CSS, LDSO, Metering Services, EES
Correlation Id	
Interfaces	IF-001/PUB-001 - Notification of Change of Supplier IF-002/PUB-002 - Change of Supplier – Registration Update to Supplier
Other interfaces (DTN, CSS)	CSS1000 CSS2800 CSS2370 CSS2860
Linked BP	BP002 BP003 BP004 BP009 BP008 BP003C
Linked design artefact	BPD001

3.4.2 BP-002 Change of Service – Metering Service

BP-002	Change of Service – Metering Service
TOM Sector	Registration
Principal Actors	Supplier (SUP) (Prospective/Current) Registration Service (REGS) New Metering Service (MSS, MSA, UMSO) Old Metering Service (MSS, MSA, UMSO) New/Existing Data Service (SDS, ADS, UMSDS) LDSO
Additional Actors	Electricity Enquiry Service (EES)
Correlation Id	
Interfaces	IF-031/PUB-031 - Supplier Service Appointment Request IF-032/PUB-032 - Reg. Serv. Response to Supplier Service App Request IF-033/PUB-033 - Registration Service Request for Service Appointment IF-034/PUB-034 - Service Provider Response to Appointment Request IF-035/PUB-035 - Registration Service Appointment Status Notification IF-036/PUB-036 - Reg. Serv. Notification of Service App. & Supporting Info IF-037/PUB-037 - Registration Service Notification of Service De-Appointment IF-038/PUB-038 - Customer Direct Contract Advisory IF-039/PUB-039 - Customer Direct Contract Advisory Response
Other interfaces (DTN, CSS)	D149 / D150 – Traditional Meter MTDs D268/D383/D384 – Advanced Meter MTDs
Linked BP	BP001-Change of Supply BP007-Disconnection BP011-Change of Market Segment BP004-Data Collection

	BP003 – Change of Service – Data Service BP003A – CSS/DCC Update
Linked design artefact	BPD002

3.4.3 BP-003 Change of Service – Data Service

BP-003	Change of Service – Data Service
TOM Sector	Registration
Principal Actors	Supplier (SUP) (Prospective/Incumbent) Registration Service (REGS) New Data Service (SDS, ADS, UMSDS) Metering Service (MSS, MSA, UMSSO) Existing Data Service (SDS, ADS, UMSDS) LDSO Electricity Enquiry Service (EES)
Correlation Id	
Interfaces	IF-031/PUB-031 - Supplier Service Appointment Request IF-032/PUB-032 - Reg. Serv. Response to Supplier Service App Request IF-033/PUB-033 - Registration Service Request for Service Appointment IF-034/PUB-034 - Service Provider Response to Appointment Request IF-035/PUB-035 - Registration Service Appointment Status Notification IF-036/PUB-036 - Reg. Serv. Notification of Service App. & Supporting Info IF-037/PUB-037 - Registration Service Notification of Service De-Appointment IF-038/PUB-038 - Customer Direct Contract Advisory IF-039/PUB-039 - Customer Direct Contract Advisory Response
Other interfaces (DTN, CSS)	D149 / D150 – Traditional Meter MTDs D268 – Advanced Meter MTDs
Linked BP	BP001-Change of Supply BP007-Disconnection BP011-Change of Market Segment BP003A – CSS/DCC Update BP003C – Transfer of Reads BP004B – UMS Data Collection
Linked design artefact	BPD003

3.4.4 BP-003A CSS and DCC Update

BP-003A	CSS and DCC Update
TOM Sector	Registration
Principal Actors	Registration Service CSS (Central Switching Service) DCC (Data & Communications Co.) Data Service (Incoming) Metering Service (Incoming)
Correlation Id	

Interfaces	IF-035/PUB-035 - Registration Service Appointment Status Notification
Other interfaces (DTN, CSS)	Existing CSS to DCC Interface Existing DCC to CSS Interface CSS0200
Linked BP	BP003-Change of Service – Data Service BP003B – Change of Existing Service Appointment
Linked design artefact	BPD03A

3.4.5 BP003B Change of Existing Service Appointment

BP-003B	Change of Existing Service Appointment
TOM Sector	Registration
Principal Actors	Registration Service Supplier Existing Metering Service (MSA, MSS, UMISO) Existing Data Service (SDS, ADS, UMISO)
Additional Actors	EES
Correlation Id	
Interfaces	IF-031/PUB-031 - Supplier Service Appointment Request IF-032/PUB-032 - Reg. Serv. Response to Supplier Service App Request IF-033/PUB-033 - Registration Service Request for Service Appointment IF-034/PUB-034 - Service Provider Response to Appointment Request IF-035/PUB-035 - Registration Service Appointment Status Notification
Other interfaces (DTN, CSS)	
Linked BP	BP-003A - CSS/DCC Update BP-004 - Data Processing
Linked design artefact	BPD03B

3.4.6 BP-003C Transfer of Reads - Change of Data Service/Agreed Reads Process

BP-003C/D	Transfer of Reads – Change of Data Service
TOM Sector	Metering & Data Services
Principal Actors	New/Outgoing Supplier New/Outgoing Data Service (SDS, ADS)
Additional Actors	
Correlation Id	
Interfaces	IF-015/PUB-015 - Request Consumption History IF-041/PUB-041 - Cumulative Reading D0300 – Disputed or missing Readings on Change of Supplier D0010 – Register Reading(s)
Other interfaces (DTN, CSS)	

Linked BP	BP-001 Change of Supplier BP-003 Change of Data Service BP-004 – Data Collection BP-005 - Data Processing
Linked design artefact	BPD03C

3.4.7 BP-004 Data Collection

BP-004	Data Collection
TOM Sector	Metering & Data Services
Principal Actors	Supplier Data Service (SDS, ADS, UMSDS) Metering Service (MSA, UMSO)
Additional Actors	DCC MDR
Correlation Id	
Interfaces	IF-024/PUB-024 - Supplier Advisory Notifications IF-041/PUB-041 - Cumulative Reading IF-047/PUB-047 - Notification of the Publication of a Downloadable Asset (ISD)
Other interfaces (DTN, CSS)	D0010 – Register Reading(s) D0004 – Notification of Failure to Obtain Reading D0001 – Request Metering System Investigation DCC- SRV5.1 DCC – SRV4.x.x D0388 – UMS Inventory D0389 – UMS Response
Linked BP	BP001 - Change of Supply BP003 - Change of Agent – Data Services BP008 – Change of Energisation BP005 – Data Processing
Linked design artefact	BPD004

3.4.8 BP-005 Data Processing

BP-005	Data Processing
TOM Sector	Metering & Data Services
Principal Actors	Data Service (SDS, ADS, UMSDS) LDSO Supplier Central Settlements (CS, LSS, MDS, VAS) Registrations Service
Additional Actors	EES
Correlation Id	
Interfaces	IF-021/PUB-021 – Settlement Period Consumption Data IF-022/PUB-022 - LSS Period Data IF-023/PUB-023 – LSS Totals Data IF-040/PUB-040 – Annual Consumption

	IF-041/PUB-041 – Cumulative Reading
Other interfaces (DTN, CSS)	D0010 – Register Reading(s)
Linked BP	BP004 – Data Collection BP018 – Load Shaping Service BP019 – Market-wide Data Service
Linked design artefact	BPD005

3.4.9 BP-007 Disconnection

BP-007	Disconnection
TOM Sector	Registration
Principal Actors	Supplier (SUP) LDSO Registration Service (REGS) Data Service (SDS, ADS, UMDS) Metering Service (MSS, MSA, UMSSO) Central Settlements (CS)
Other Actors	Electricity Enquiry Service (EES) CSS
Correlation Id	
Interfaces	IF-009/PUB-009 - Registration Notification of Disconnection IF-037/PUB-037 - Notification of De-Appointment
Other interfaces (DTN, CSS, other)	CSS1900 CSS02370 CSS0300 CSS02860 D0262 – Rejection of Disconnection D0132 – Details of Disconnection of Supply DB03
Linked BP	BP008-Change of Energisation BP009-Change of Meter
Linked design artefact	BPD007

3.4.10 BP-008 Change of Energisation

BP-008	Change of Energisation
TOM Sector	Registration
Principal Actors	Supplier (SUP) LDSO Registration Service (REGS) Data Service (SDS, ADS, UMDS)

	Metering Service (MSS, MSA, UMSO) Central Settlements (LSS, MDS)
Other Actors	EES
Correlation Id	
Interfaces	IF-007/PUB-007 - Update of Change of Energisation Status Outcome to Registration IF-008/PUB-008 - Registration Service Notification of Change of Energisation Status IF-041/PUB-041 - Cumulative Meter Reading
Other interfaces (DTN, CSS)	D010 – Register Reading(s) D0134 – Request to Change Energisation Status D0139 – Confirmation or Rejection of Energisation Status Change D0179 – Confirmation of Energisation/De-Energisation of Prepayment Meter
Linked BP	BP005 – Data Processing BP004 – Data Collection BP009 – Change of Metering
Linked design artefact	BPD008

3.4.11 BP-009 Change of Metering

BP-009	Change of Meter
TOM Sector	Registration
Principal Actors	Supplier (SUP) LDSO Registration Service (REGS) Data Service (SDS, ADS) Metering Service (MSS, MSA)
Other actors	EES
Correlation Id	
Interfaces	IF-005/PUB-005 - Metering Service MTD Updates to Registration IF-006/PUB-006 - Registration Service Notification of MTD Update(s) IF-041/PUB-041 - Cumulative Meter Reading
Other interfaces (DTN, CSS)	D0149/D0150 – Traditional MTDs D268/D383/D384 – Advanced MTDs D0010 – Register Readings(s) D0142 – Request for Installation or Change to a Metering System D0002 – Fault Resolution Report or Request Decision for Further Action D0221 – Notification of Failure to Install Metering System
Linked BP	BP008-Change of Energisation BP001 – Change of Supply BP007-Disconnection BP011-Change of Market Segment BP004 – Data Collection
Linked design artefact	BPD009

3.4.12 BP-010 Change of Registration Data

BP-010(A/B/C/D)	Change of Registration Data
TOM Sector	Registration
Principal Actors	Supplier (SUP) CSS LDSO

	Registration Service (REGS) Data Service (SDS, ADS, UMDS) Metering Service (MSS, MSA, UMSO) Central Settlements (LSS/MDS) DCC
Additional Actors	EES
Correlation Id	
Interfaces	IF-018/PUB-018 - Notification of Registration Data Item Changes IF-019/PUB-019 - Maintain MPAN Relationship IF-020/PUB-020 - Maintain MPAN Relationship Response IF-025/PUB-025 - Supplier Updates to Registration IF-026/PUB-026 - Registration Service Notification of Supplier Data Changes
Other interfaces (DTN, CSS)	CSS-2000 CS00300 DB02 D0386 – Manage Metering Point Relationships DB05 Existing DCC to Registration Interface
Linked BP	BP004 – Data Collection BP009 – Change of Meter BP011 – Change of ConType and/or Mkt Segment
Linked design artefact	BPD010

3.4.13 BP-011 Change of Connection Type and/or Market Segment

BP-011(11B/11C)	Change of Connection Type and/or Market Segment
TOM Sector	Registration
Principal Actors	Supplier Registration Service Data Service Existing & Prospective (ADS, SDS) Metering Service Existing & Prospective (MSS, MSA) LDSO Central Settlement
Additional Actors	EES
Correlation Id	
MHHS Interfaces	IF-031/PUB-037 – Supplier Service Appointment Request IF-032/PUB-032 – Registration Response to Service Appointment Request IF-033/PUB-033 – Registration Request for Service Appointment IF-034/PUB-034 – Service Provider Response to Appointment Request IF-035/PUB-035 – Registration Service Appointment Status Notification IF-036/PUB-036 – Registration Service Notification of Service Appointment & Supporting Info IF-037/PUB-037 – Notification of De-Appointment IF-005/PUB-005 - Metering Service MTD Updates to Registration IF-006/PUB-006 - Registration Service Notification of MTD Updates IF-043/PUB-043 - Notification of Change of Connection Type IF-044/PUB-44 – Notification of Change in Market Segment IF-045/PUB-45 – Notification of Invalid or No SP's Appointed
Other interfaces (DTN, CSS)	D0142 – Request for Installation or Change to a Metering System D0002 – Fault Resolution Report or Request Decision for Further Action D0221 – Notification of Failure to Install Metering System
Linked BP	BP002 - Change of Agent-Metering Services BP003 - Change of Agent- Data Service

	BP009 - Change of Meter BP010 – Change of Registration Data
Linked design artefact	BPD011

3.4.14 BP-013 Demand Disconnection

BP-013	Demand Disconnection Events
TOM Sector	Elexon Central Systems
Principal Actors	Electricity System Operator (ESO) Licensed Distribution System Operator (LDSO) Balancing Settlement Code Company (BSCCo) Market-wide Data Service (MDS) Industry Standing Data (ISD) Volume Allocation Run (VAS) Other BSC Systems
Correlation Id	
MHHS Interfaces	PUB-001 - Notification of Change of Supplier PUB-008 - Registration Service Notification of Change of Energisation Status PUB-009 - Notification of LDSO Disconnection / CSS De-Registration IF-013/PUB-013 -MDS Defaults Applied PUB-018 - Notification of Registration Data Item Changes IF-014/PUB-014 -Rejected Consumption Data Submission PUB-021- UTC Settlement Period Consumption Data PUB-026 - Registration Service Notification of Supplier Data Chg PUB-036 - Registration Service Notification of Service Appointment & Supporting Info PUB-043 - Registration Service Notification of Change of Connection Type PUB-044 - Registration Service Notification of Change of Segment PUB-045 - Registration Service Notification of Invalid Segment or No Agents Appointed
Other interfaces (DTN, CSS)	Reports MHHS-REP-001 MHHS-REP-002 MHHS-REP-005 MHHS-REP-006 MHHS-REP-D0369 MHHS-REP-D0370 MHHS-REP-D0373 MHHS-REP-D0374
Linked BP	BP005-Data Processing BP010-Change of Registration Data
Linked design artefact	BPD013

3.4.15 BP-016 Consumption Amendment

BP-016	'Override Read' Submission & Consumption Amendment Processing
---------------	--

TOM Sector	Elexon Central Systems
Principal Actors	Supplier Data Service Existing/Previous (SDS, ADS, UMSDS) Central Settlements BSC Dispute Process Consumption Amendment 'Audit Function' TBD LDSO
Correlation Id	
MHHS Interfaces	IF-027/PUB-027 - Consumption Amendment Request IF-028/PUB-028 - Consumption Amendment Outcome IF-021/PUB-021- UTC Settlement Period Consumption Data IF-014/PUB-014 ECS Rejection of Settlement Period Cons. Data IF-041/PUB-041 Cumulative Reading
Other interfaces (DTN, CSS)	
Linked BP	BP005 – Data Collection BP019 – Market-wide Data Service
Linked design artefact	BPD016

3.4.1 BP-017 Optional SDS/MDR Standard Interactions (CR023)

BP-017	'Override Read' Submission & Consumption Amendment Processing
TOM Sector	MDR-SDS Interactions
Principal Actors	Smart Data Service (SDS) Meter Data Retrieval Service (MDR) Data Integration Platform (DIP) DCC
Correlation Id	
MHHS Interfaces	IF-061/PUB-061 – MDR Start Collection IF-062/PUB-062 - MDR Start Collection Response IF-063/PUB-063 - MDR Stop Collection IF-064/PUB-064 – MDR Consumption IF-065/PUB-065 – MDR Reading
Other interfaces (DTN, CSS)	
Linked BP	BP003 – Data Service Appointment BP0003B – CSS/DCC Update (Change MDR) BP005 – Data Processing
Linked design artefact	BPD017

3.4.2 BP-018 Load Shaping Service

BP-018	Load Shaping Service
TOM Sector	Elexon Central Systems
Principal Actors	Load Shaping Service (LSS) Industry Standing Data (ISD) Market-wide Data Service (MDS)
Other Actors	EES

Correlation Id	No
MHHS Interfaces	<p>IF-001/PUB-001 - Notification of Change of Supplier</p> <p>IF-008/PUB008 - Registration Service Notification of Change of Energisation Status</p> <p>IF-009/ PUB-009 - Notification of LDSO Disconnection / CSS De-Registration</p> <p>IF-018/ PUB-018 - Notification of Registration Data Item Changes</p> <p>IF-021/PUB-021 - UTC Settlement Period Consumption Data</p> <p>IF-022/PUB-022 - LSS Period Data</p> <p>IF-023/PUB-023 – LSS Totals Data</p> <p>IF-026/PUB-026 -Registration Service Notification of Supplier Data Chg</p> <p>IF-036/PUB-036 - Registration Service Notification of Service Appointment & Supporting Info</p> <p>IF-043/PUB-043 - Registration Service Notification of Change of Connection Type</p> <p>IF-044/PUB-044 - Registration Service Notification of Change of Segment</p>
Other interfaces (DTN, CSS, Elexon)	<p>EL-022</p> <p>EL-023</p>
Linked BP	<p>BP005 – Data Processing</p> <p>BP010 – Change of Registration Data</p> <p>BP019 – Market-wide Data Service</p> <p>BP001 – Change of Supply</p> <p>BP003 – Change of Data Service</p> <p>BP008 – Change of Energisation</p> <p>BP007 – Disconnection</p> <p>BP011 – Change of ConType and/or Mkt Segment</p>
Linked design artefact	BPD018

3.4.3 BP-019 Market Wide Data Service

BP-019	Market Wide Data Service
TOM Sector	Elexon Central Systems
Principal Actors	<p>Load Shaping Service (LSS)</p> <p>Volume Allocation Service (VAS)</p> <p>Industry Standing Data (ISD)</p> <p>Market-wide Data Service (MDS)</p>
Other Actors	<p>Other BSC Systems</p> <p>Electricity Market Reform (EMRS)</p>
Correlation Id	No
MHHS Interfaces	<p>IF-001/PUB-001 - Notification of Change of Supplier</p> <p>IF-008/PUB008 - Registration Service Notification of Change of Energisation Status</p> <p>IF-009/PUB-009 - Notification of LDSO Disconnection / CSS De-Registration</p> <p>IF-013/PUB-013 -MDS Defaults Applied</p> <p>IF-014/PUB-014 -Rejected Consumption Data Submission</p> <p>IF-018/PUB-018 - Notification of Registration Data Item Changes</p> <p>IF-021/PUB-021 - UTC Settlement Period Consumption Data</p> <p>IF-022/PUB-022 - LSS Period Data</p> <p>IF-026/PUB-026 -Registration Service Notification of Supplier Data Chg</p> <p>IF-036/PUB-036 - Registration Service Notification of Service Appointment & Supporting</p> <p>IF-040/PUB-040 - Notification of ECS Annual Consumption</p> <p>IF-043/PUB-043 - Registration Service Notification of Change of Connection Type</p> <p>IF-044/PUB-044 - Registration Service Notification of Change of Segment</p>

	<p>IF-045/PUB-045 Registration Service Notification of Invalid Segment or No Agents Appointed</p> <p>REPORTS</p> <p>MHHS-REP-002</p> <p>MHHS-REP-002A</p> <p>MHHS-REP-090</p> <p>MHHS-REP-006</p> <p>MHHS-REP-020</p> <p>MHHS-REP-030</p> <p>MHHS-REP-060</p> <p>ELEX-REP-001</p> <p>MHHS-REP-009</p> <p>MHHS-REP-D0354</p>
Other interfaces (DTN, CSS, Elexon)	ELEX-REP-001
Linked BP	<p>BP005 – Data Processing</p> <p>BP010 – Change of Registration Data</p> <p>BP018 – LSS</p> <p>BP012 – ISD</p> <p>BP020 – Volume Allocation Service</p> <p>BP001 – Change of Supply</p> <p>BP003 – Change of Service Provider – Data Service</p> <p>BP008 – Change of Energisation</p> <p>BP007 – Disconnection</p> <p>BP011 – Change of ConType and/or Mkt Segment</p>
Linked design artefact	BPD019

3.4.4 BP-020 Volume Allocation Service

BP-020	Volume Allocation Service
TOM Sector	Elexon Central Systems
Principal Actors	<p>Volume Allocation Service (VAS)</p> <p>Industry Standing Data (ISD)</p> <p>Market-wide Data Service (MDS)</p>
Other actors	Other BSC Systems
Correlation Id	No
MHHS Interfaces	<p>REP-003</p> <p>REP-003A</p> <p>REP-004</p> <p>REP-007</p> <p>REP-008</p> <p>REP-090</p> <p>ELEX-REP-040</p> <p>ELEX-REP-050</p> <p>ELEX-REP-060</p> <p>ELEX-REP-080</p> <p>ELEX-REP-P0048</p> <p>ELEX-REP-P0236</p> <p>ELEX-REP-P0237</p> <p>ELEX-REP-D0081</p>

	ELEX-REP-D0296 ELEX-REP-D0266 ELEX-REP-D0369 ELEX-REP-D0370 ELEX-REP-D0374 ELEX-REP-D0373
Other interfaces (DTN, CSS)	P0181 P0182 P0183 P0012 P0034 P0236 P0191
Linked BP	BP005 – Data Processing BP019- Market Wide Data Service BP021- Industry Standing Data
Linked design artefact	BPD020

3.4.5 BP-021 Industry Standing Data

BP-021	Industry Standing Data
TOM Sector	Elexon Central Systems
Principal Actors	BSCCo Industry Standing Data (ISD)
Other actors	Other BSC Systems (LSS, MDS, VAS) All TOM actors for receipt
Correlation Id	No
MHHS Interfaces	IF-047/PUB047 – ISD Data Notification
Other interfaces (DTN, CSS)	
Linked BP	BP018 – Load Shaping Service BP019 – Market-wide Data Service BP020 – Volume Allocation Service
Linked design artefact	BPD021

3.5 MHHS Message/Event Channel Instances

The MHHS interfaces have the non-functional requirements placed on each of the messages channels. The following metrics are defined:

- Sender – DIP will check participant has the correct role for the channel
- Recipient:
 - Always
 - Primary
 - Secondary
- Workflow Correlation Id – used to track business process – section 4.2.3.3 for description.

- Security category

For an up to date list see *MHSP-DES138 Interfaces Catalogue – IF_LIST* tab

3.6 Actor Workflows Summary

The table below summarises the data flows that each service has some participation within; all the outbound (interfaces) and the inbound (publications) messages/events. (n.b. inbound/outbound with respect to the service).

Message Event Channels			
Actor	Context	Out bound	In bound
MSA	Sending, Current, Previous, Incoming, Prospective	IF-005, IF-007, IF034, IF-038, IF-041	PUB-003, PUB-006, PUB-008, PUB-018, PUB-026, PUB-033, PUB-035, PUB-036, PUB-037, PUB-039, PUB-043, PUB-045, PUB-047, PUB-020
MSS	Sending, Current, Previous, Incoming, Prospective	IF-005, IF-007, IF034, IF-038, IF-041	PUB-003, PUB-004, PUB-006, PUB-008, PUB-018, PUB-026, PUB-033, PUB-035, PUB-036, PUB-037, PUB-039, PUB-043, PUB-045, PUB-047, PUB-020
UMSO	Sending, Current, Previous, Incoming, Prospective	IF-007, IF-034	PUB-003, PUB-008, PUB-033, PUB-035, PUB-036, PUB-037, PUB-043,
ADS	Sending, Current, Previous, Incoming, Prospective	IF-021, IF-015, IF034, IF-038, IF-041, IF-028	PUB-003, PUB-006, PUB-008, PUB-009, PUB-016, PUB-013, PUB-014, PUB-018, PUB-022, PUB-023, PUB-024, PUB-026, PUB-027, PUB-033, PUB-035, PUB-036, PUB-037, PUB-039, PUB-040, PUB-041, PUB-043, PUB-045, PUB-047, PUB-020
SDS	Sending, Current, Previous, Incoming, Prospective	IF-021, IF034, IF-038, IF-041, IF-028, IF-061, IF-063	PUB-003, PUB-006, PUB-008, PUB-009, PUB-013, PUB-014, PUB-018, PUB-022, PUB-023, PUB-024, PUB-026, PUB-027, PUB-033, PUB-035, PUB-036, PUB-037, PUB-039, PUB-040, PUB-041, PUB-043, PUB-045, PUB-047, PUB-020, PUB-062, PUB-064, PUB-065
MDR		IF-062, IF-064, IF-065	PUB-061, PUB-063, <u>PUB-006</u> , <u>PUB-008</u> , <u>PUB-026</u> , <u>PUB-024</u>
UMSDS	Sending, Current, Previous, Incoming, Prospective	IF-021, IF-034, IF-028	PUB-003, PUB-008, PUB-013, PUB-014, PUB-018, PUB-022, PUB-023, PUB-024, PUB-027, PUB-033, PUB-035, PUB-036, PUB-037, PUB-040, PUB-043
MDS		IF-013, IF-014, IF-040	PUB-001, PUB-003, PUB-008, PUB-009, PUB-018, PUB-021,

			PUB-022, PUB-026, PUB-036, PUB-043, PUB-044, PUB-045, PUB-020
CS		IF-013, IF-014, IF-022, IF-023, IF-047, IF-040	PUB-008, PUB-009, PUB-018, PUB-021, PUB-026, PUB-036, PUB-043, PUB-044
LSS		IF-014, IF-022, IF-023	PUB-001, PUB-008, PUB-009, PUB-018, PUB-021, PUB-026, PUB-036, PUB-043, PUB-044
REGS		IF-001, IF-002, IF-003, IF-006, IF-008, IF-009, IF-018, IF-026, IF-032, IF-033, IF-035, IF-036, IF-037, IF-039, IF-043, IF-044, IF-045, IF-020	PUB-005, PUB-007, PUB-051 (non-DIP), PUB-031, PUB-025, PUB-034, PUB-038, PUB-047, PUB-040, PUB-019
SUP	Current, Previous, Incoming	IF-024, IF-025, IF-027, IF-031, IF-041, IF-019	PUB-001, PUB-002, PUB-003, PUB-004, PUB-006, PUB-007, PUB-008, PUB-009, PUB-018, PUB-021, PUB-022, PUB-023, PUB-026, PUB-028, PUB-032, , PUB-035, PUB-036, PUB-037, PUB-039, PUB-041, PUB-043, PUB-044, PUB-047, PUB-020
LDSO			PUB-001, PUB-003, PUB-006, PUB-008, PUB-009, PUB-013, PUB-014, PUB-018, PUB-019, PUB-020, PUB-021, , PUB-026, PUB-036, PUB-037, PUB-040, PUB-041, PUB-043, PUB-044, PUB-045, PUB-047
EES			PUB-006, PUB-008, PUB-009, PUB-018, PUB-020, PUB-026, PUB-036, PUB-037, PUB-039, PUB-040, PUB-043, PUB-044, PUB-047, PUB-050
Any			
Public			PUB-022, PUB-023

4 Messaging Architecture

4.1 Logical View

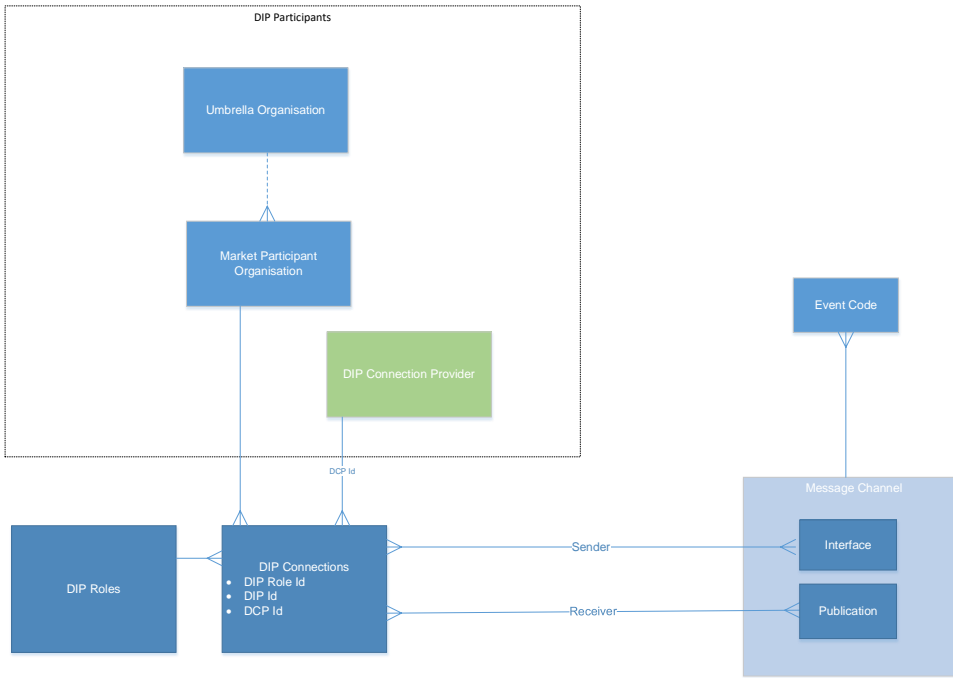


Figure 2 - DIP Workflows logical view

The **MHHS TOM workflows** will be orchestrated by **Message/Event channels** where messages are exchanged between **Market Participants** via the DIP. A **Message/Event channel** represent a message exchange between two **Market Participants**, an inbound flow called an **Interface** and a corresponding outbound flow called a **Publication**.

When on-boarded a **Market Participant Organisation (MPO)** will be assigned one or many **DIP (Participant) IDs** and will have one or many **market roles or services**, depending on the roles they have registered for and the roles they are permitted to have.

For organisations that control multiple Market Participant Organisations the concept of an Umbrella Organisation exists; the Umbrella organisation provides a mechanism to logically link their different Market Participant Organisations, e.g. UKPN operates as three distinct MPOs: Eastern Power Networks PLC, London Power Networks PLC and South Eastern Power Networks PLC .

Access to individual **Message/Event channels** will be determined by a set of **market roles (services)**, or possibly only a single pair of roles, that can send or receive the messages on that channel. A role will either be allowed to send or receive messages on a specific channel.

Market Participants will be responsible for managing the message/event channels determined by their **market roles**; this will be the default configuration.

Market Participants will have different options to manage how to manage the physical delivery/sending of messages by extending the default configuration. They will be able to assign a **DIP Connection Provider** – A **Market Participant** may wish for an alternate party/agent, a **DIP Connection Provider**, to proxy a specific role or all their roles on their behalf. In this scenario, the **Market Participant** will need to assign responsibility of their access to DIP to the **DIP**

Connection Provider by allocating the chosen role(s) to their provider. A **DIP Connection Provider** is a separate organisation that must be on-boarded separately as a **Market Participant** with a DIP Connection Provider role.

This ability to provide different proxies for managing different channels does not alter the addressing of messages; messages will still be addressed to the primary **DIP Participant ID** rather than any of the proxy recipients, i.e. the addressee recipient or sender will always be the logical recipient/sender. The proxy senders/recipients, i.e. the physical senders/recipients, will require their own set of certificates in order to interact with the DIP. The DIP will be aware of the proxy recipients and will digitally sign messages appropriately, i.e. the physical sender or receiver of the message.

4.1.1 DIP & Market Participant IDs/Roles Codes

Within the MHHS TOM there are a number of business processes that are orchestrated by both DIP and DTN data flows. In order to support these business process Market Participants need a common mechanism for identification across both systems. This will be achieved by having a mapping between DIP IDs/role codes and Market Participant IDs/roles codes. Three options were considered:

1. Reuse of Market Participant Id/ Market Role Codes in DIP Participant Ids/Role Codes
2. Map Market Participant Ids to DIP Ids and map Market Participant Role Codes to DIP Role Codes
3. Map Market Participant Ids/Roles Code pairs to DIP Ids/Role Codes

The first two options were considered to be too restrictive and tied up with legacy issues around the data, and the third option provided the greatest flexibility for Market Participants and hence was the option chosen.

In practice this will work in the following way:

- DIP Participant ID and DIP Role will be used to Identify participants *within* the DIP
- DIP Addressing/Routing will utilise DIP Participant ID & DIP Role code
- ISD (entity M16) will enable a 1-2-1 mapping between each DIP Participant ID /Role combination and DTN Participant ID/Role combination
- Participants will need to utilise ISD to use DIP Participant ID/Role to identify the 'DTN delivery point' when sending D-Flows
- Conversely, ISD will need to be used to understand where D-Flows are received via DTN, and the mapped DIP Participant/Role.

4.2 Message/Event Channel

Each message channel will use a standard RESTful architecture for both the inbound Interface and the outgoing publication: a Send Message API ([https://api.\(environment\).energydataintegrationplatform.co.uk/{version}/dip-channel/{IF-xxx}](https://api.(environment).energydataintegrationplatform.co.uk/{version}/dip-channel/{IF-xxx})) for incoming messages and a Receive Messages webhook for outgoing messages. Each message channel has both synchronous and asynchronous methods for reporting status/error messages back to the Sender.

A standard event/message channel has the following pattern. For context, the points at which the different level of validation are also shown:

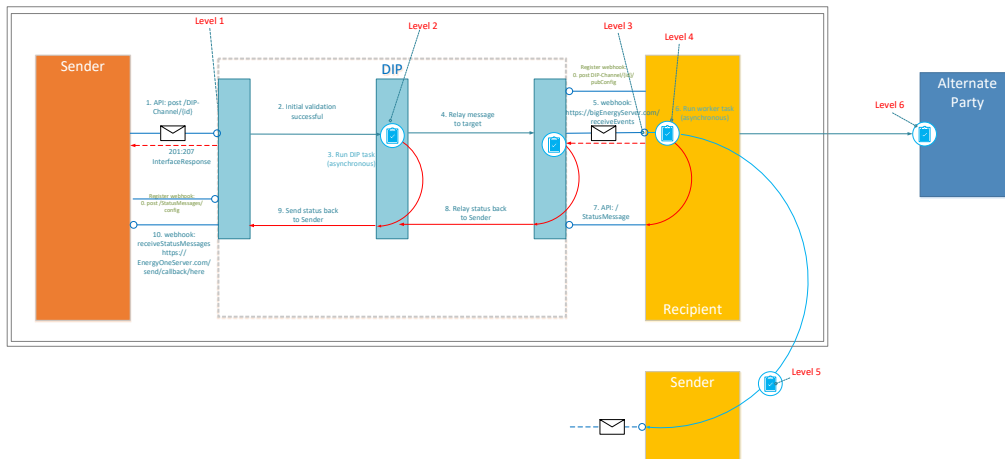


Figure 3 - Message Channel Pattern and validation levels

In a message exchange there will be 4 levels of message acceptance/validation within the message channel itself:

- Level 1 - initial synchronous validation by the DIP
- Level 2 - secondary asynchronous validation by the DIP
- Level 3 - initial synchronous validation by the Participant
- Level 4 - secondary asynchronous validation by the Participant

Then, outside of the message channel other validation may occur, levels 5 & 6, which relates to the workflow being undertaken:

- Level 5 – Response through a new message channel where the original recipient becomes the new sender, e.g. IF-006 provides a response to IF-005 (see section 5.4)
- Level 6 – where the response is via a third-party, e.g. Service Appointment by the Supplier (IF-031) via the Registration Service - the outcome and if appropriate error reason code will be contained with the body of a subsequent message (IF-035).

The processing within a message channel follows the following pattern:

0. Recipient registers webhook for receipt of publication; sender registers webhook for the receipt of status messages.
1. Sender sends message/events to the DIP via the post /DIP-Channel/{IF-xxx} API, see section 4.44.4.
2. Initial receipt of events/messages by the DIP is accompanied with an auditable acknowledgement. This will include the Level 1 validation http response, see section 4.4.3.
3. The message traverses through the DIP where it undertakes internal processing where Level 2 validation also occurs, see section 4.3.
4. Message is relayed to the intended recipients
5. Onward delivery of message/events from the DIP to the recipient occurs via registered webhook with an auditable acknowledgement and Level 3 validation, see section 4.64.5.
6. The recipient will undertake further validation checks (Level 4).
7. If an error condition is found these are reported back to DIP via the StatusMessage API, see section 4.74.6
8. Both the Level 3 synchronous and Level 4 asynchronous response reported back to Sender

9. DIP relays all Level 2/3/4 responses to the Sender
10. Sender receives all Level 2/3/4 responses via the StatusMessages webhook, see section [4.84.7](#)

It should be noted:

- the DIP handles the message in two phases, a synchronous check at the API that are communicated directly back to the Sender, and then further asynchronous checks and addressing that are carried out once the message has been initially received. The rationale behind the split, is that the initial API is intended to be as lightweight as possible thereby increasing message submission speed.
- Where no error condition is encountered no event/message acknowledgement other than the initial API response is sent back to the Sender.
- Some business process acknowledgements, either positive or negative, are recognised as distinct message/event flows (identified in table *MHHS Interfaces Catalogue*).
- Security between the Market Participants and the DIP is ensured by securing a MTLS connection via TLS handshake (see *MHHS Code of Connection document*)
- The guideline for message processing is that on receipt of message a Market Participant should endeavour to validate the message contents as much as feasibly possible and relay all validation errors back to the Sender, i.e. not stop at the first error.
- Detail around the validation checks that are undertaken are described in the *MHHS Interfaces Catalogue*.

4.2.1 Message Structure

Each message channel is defined by a specific **interface** definition, which defines the incoming messages, and also a **publication**, which defines the corresponding outgoing message. There is a direct 1:1 mapping between **interfaces** and **publications**.

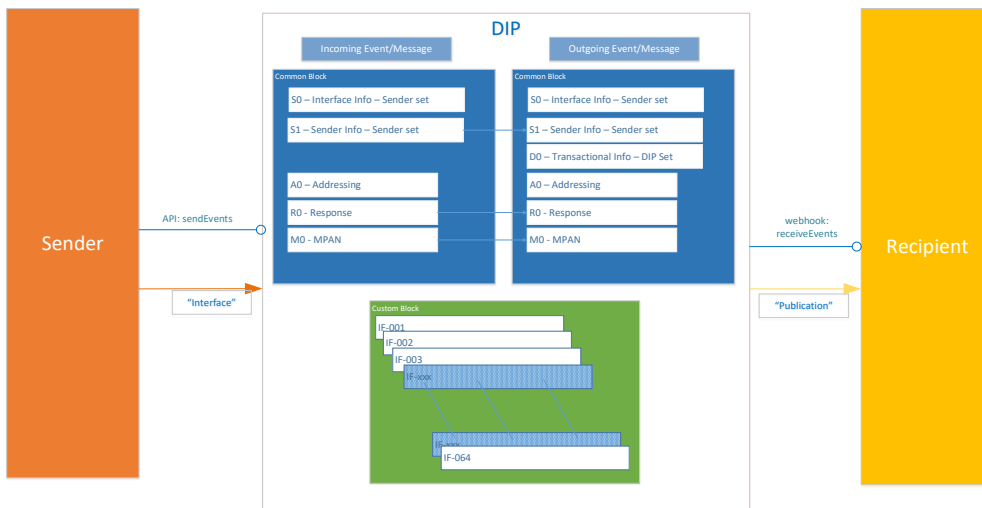


Figure 4 –Message Channel definition – data

Each message will have two distinct components a common block and a custom block. The contents of the common block in the interface incoming message will differ from that of the outgoing message in the publication whilst the custom block passes through the DIP unchanged.

In a standard message exchange the following blocks are sent and received:

	Sender	DIP	Archive	Receiver
Interface	API /dip-channel/{IF-xxx}			MP webhook
Header/SO	Sender	X	◇	◇
Header/S1	Sender	X	◇	◇
Header/AO	Address	☒	◇	◇
Header/RO	Response	☒	◇	◇
Header/DO	DIP	X	◇	◇
Header/MO	MPAN	X	◇	◇
Message Body		X ^o	◇	◇

When a message is sent the Sender sends a message with the blocks indicated above. The blocks with a **X** are the sole responsibility of the Sender or the DIP, whilst those **☒** some of the fields are populated by both the Sender and DIP. **X^o** – denotes the potential for some data fields to be obfuscated by the DIP. The message blocks written to archive and sent to the Recipient are marked **◇**

The descriptions of each of the common blocks is given in the API definitions below.

The descriptions of custom block will depend on the specific interface/publication and is defined in the *MHHS Interface catalogue*.

4.2.2 Optional/Nullable Fields

Messages adopt the following convention for representing optional and required data items in messages: all data items properties are marked as required, where data items are optional then they will be marked as nullable. The underlying datatype for each data item will reflect the nullable property, i.e., nullable – true/false.

Worked examples for different data types can be seen in the table below:

Data Type	Nullable value to use
String	null
Boolean	null
Number	null

This is also valid for any enumerations that allow nullables.

4.2.3 Message Traceability & Repudiation

Messages exchanged over the DIP will leave a discernible audit path as they progress from initial receipt to final delivery via the API transaction logs and the message archive. Each individual message will be uniquely identified with a Sender Unique Reference by the Sender and the DIP will provide a corresponding Transaction Id for each message that will be returned to the Sender in the API HTTP response body of the Send Messages API call.

4.2.3.1 Sender Unique Reference

The Sender Unique Reference identifier for the event/message provided by the message Sender. The algorithm for setting this is provided below:

S - Interface Id - Participant Id - Role Id - Date - Sequence (hex)/Participant Ref

Eg.

Interface Id	'IF-005'
Participant Id	'0123456789'
Role Id	'SUP'
Date	'2022-03-13'
Sequence/Ref	'12345687a1234567a'
Hence	'S-IF-005-0123456789-SUP-20222313-12345687a1234567a'

It is imperative that the first part of the Sender Reference obeys the format described above so that a message can be instantly recognised and traced, i.e. Interface Id, Participant Id, Role Id and date. The final sequence/ref has only the following restrictions:

- must use standard alphanumeric characters
- needs to guarantee uniqueness for the Sender Unique Reference
- not exceed the length of the Sender Unique Reference (200 - which includes the prefix components)

The DIP will validate the Interface Id, Participant Id and Role Id only on receipt of the message, i.e. no individual check of date or sequence, however, the whole Sender Unique Reference will be checked for duplicates.

4.2.3.2 Transaction Id

Unique identifier for the event/message provided by the DIP and for the Sender it provides a technical acknowledgment for the message. The Transaction Id is added to the message (DO block) and can be used to uniquely identify a message as it traverses through the system. Transaction Id generated by the DIP will take the form:

T - Interface Id - Participant Id - Role Id - Date - Sequence (hex)

Eg.

Interface Id	'IF-006'
Participant Id	'0345890082'
Role Id	'SUP'
Date	'20220401'
Sequence	'1234cc091234560987654abc' (hex)

'T-IF-006-0345890082 -SUP-20220401-1234cc091234560987654abc'

The sequence component will be sequential within each message channel, however, this cannot be relied upon categorically for sequential message processing. The processing behind the APIs will be event driven serving multiple endpoints simultaneously and maintaining a genuine ordered sequence is not a requirement. The sequence will only guarantee uniqueness.

4.2.3.3 (Workflow) Correlation Id

For some MHHS business processes (defined in the *MHHS Interfaces Catalogue*) there is a requirement for each specific workflow instance to be uniquely identified and then for all messages in that workflow to reference the unique ID. This will be the Workflow Correlation ID. (A similar requirement exists in Faster Switching). This will operate as follows:

1. The party initiating the workflow will send the first message in the sequence to the DIP.
2. The DIP will recognise events/messages arriving on certain channels that need a unique Workflow Correlation ID to be generated.

The DIP will generate the Workflow Correlation ID, written to the message for onward processing and returned to the message sender as part of the HTTP response body.

The Workflow Correlation Id generated by the DIP will take the form:

CI - Date - Sequence

Eg.

Date '20220401'
Sequence '1234567890abc1234cc0912345698754abc' (hex)

'CI-20220401-1234567890abc1234cc0912345698754abc'

4.2.4 Message Security

Some of the data flowing through the DIP will include sharing personal data and fall within the remit of the UK GDPR or confidential or sensitive information. Hence, there will be a requirement to ensure the security of the data, which should be achieved by the use of an mTLS connection between DIP and Participant. The subject of message security is covered in greater detail in the *MHHS End-to-End Security Architecture* document.

There is also a requirement for message repudiation, i.e., ensuring a message is sent from only the expected party, hence all messages sent to the DIP will be digitally signed by the Sender.

To help simplify the message privacy classification, initial analysis has identified four different security categories:

Category	Description	Message Signing
1	Public Data	Digitally signed
2	MPAN	Digitally Signed
3	MPAN + PII	Digitally Signed
4	MPAN + Consumption data	Digitally Signed

Each of the MHHS interfaces will be assigned one of these categories.

The requirement is for all messages to be signed (details to be provided in the MHHS Code of Connection document). Also, for information, the requirement for end-to-end encryption on message channels was dropped earlier in Spring 2022.

4.2.5 JSON Message Encoding & Decoding

All JSON messages should be encoded using UTF-8 as a standard, to ensure correct encoding and decoding across participants.

4.2.6 Service Desk Integration

When a message is received in the DIP, as part of its internal processing, the DIP will add a Service Desk URL to a message. This is a pre-emptive and will provide a URL with pre-populated parameters, where either the receiver of the original message or the response message, will be able to create a new or access an existing service desk ticket in the event on an issue with the message. It is envisaged that Market Participants will have application front-ends displaying logs of DIP messages from their own IT systems, and activating this URL will access the DIP Service Desk. Obviously, this link could equally well be activated from a DIP console showing DIP message logs. Under everyday operations this capability is not required as the majority of messages are processed successfully, however, for the situations where an issue arises, parties will have an easy path into the Service Desk. (To be agreed during next phase of DIP design).

4.2.7 Audit Trail Integration

The proposal is for the DIP to add a URL to the message that will locate the message in the corresponding audit screen on the DIP (to be agreed during next phase of DIP design).

4.3 DIP Processing

At the physical interface the DIP will establish an encrypted mTLS connection in which both parties use X.509 digital certificates to authenticate with each other. The details of the connection requirements see *MHHS Code of Connection document*.

The DIP will also validate the digital signature of the message using the Sender's public key.

After completing the security checks the DIP will undertake the following steps:

- Message validation
- Message obfuscation
- Writing message to archive
- Addressing & Routing – forward message to each of the intended recipients - see 4.3.1 below

A full description of the DIP's internal processing is provided in the *DIP Functional Specification*.

4.3.1 Message Addressing & Routing

The DIP is responsible for sending message to the correct recipients. Within the MHHS TOM there are three recognised types of message addressing:

Name	Action	Responsibility
Targeted or Primary Routing	DIP uses the Primary recipient List in the A0 block in the message header. The Primary recipient is only known by the Sender.	Sender
MPAN Based Lookup or Secondary Routing	The MPAN core in the M0 block and optionally the Event Code and/or other fields (to determine the targeted roles) provides the lookup to the MPAN lookup address function.	DIP
Always	For a specific message channel a message is either always sent to a named participant or all participants	DIP

	assigned to a designated role (role is assigned to the message channel)	
--	---	--

The DIP can apply a single or all types of addressing to a single message channel. Messages are sent to DIP Participant Id/DIP Role Codes, hence a DIP Participant can receive a message more than once if they undertake multiple roles that are the recipients for the message. However, each message will only be sent once to a single DIP Participant Id/DIP Role Code pairing.

The Interface Id and event Code/other fields determine which type of addressing is appropriate (see routing rules table in the Interfaces Catalogue (ref *MHHS-E2E003-Physical Interface Specifications*)), if message is inappropriately addressed by the Sender, i.e. primaryRecipient is undefined when it is required, then an error message is returned.

The DIP will add the correct addresses to the Addressing block (A0) to the message before the message is archived.

4.3.2 Message/Event Obfuscation

There is the requirement for the DIP to potentially obfuscate the contents of a message based on the recipient's role within a particular message channel. This requirement is implemented so that the message sender does not have to send multiple messages to different recipients containing a subset of data; instead, a single message is sent to multiple recipients. As all data items within a data block are mandatory, the DIP will replace the data with the following values:

String values - multiple 'x' for the maximum length of the field

Date values – the date '1900-01-01 00:00' is used

Numeric values – no requirement at present

Boolean values – true

DIP IDs – '9999999999' (to ensure it remains a numeric string for regex validation)

MPIDs – 'XXXX' (to ensure the regex that enforces capitalisation endures)

Obviously, it is the responsibility of the recipient to know that they are receiving obfuscated data on a specific message channel and must not solely rely on message contents.

Commented [RG1]: DIN-900

4.4 Send Messages API

The send event API (<https://api.{environment}.energydataintegrationplatform.co.uk/{version}/dip-channel/{IF-xxx}>) is used to submit messages to the DIP. The full Open API definition can be found here: <https://app.swaggerhub.com/orgs/MHHS/PROGRAMME>²

The message sender will need to send messages to channel specific endpoints, i.e. all messages need to be of the same IF. The messages within a single transaction (API call) can have mixed MPANs.

The return code and response body provides the sending Participant with an auditable trace on the success of the receipt of the messages by the DIP.

4.4.1 Sender Responsibilities

On sending a set of events/messages the Sender will undertake the following:

Message Construction

On sending a message the Sender is responsible for construction the message header and payload as described in the section below. The use of Sender Unique Reference is described below.

Message Addressing

When a message is sent, a Participant will need to be aware of the type of addressing that needs to be applied and address the message accordingly. The type of addressing for each message channel is defined in MHHS Interfaces

² Whilst the APIs are being designed the API server and base URL defined in the API swagger definitions are only interim values. Once the final hosting arrangements for the DIP are known then these will change to the final correct values.

Catalogue. The Sender is only responsible for primary addressing, the DIP is responsible for secondary and always addressing.

Message Signing

Once the message has been constructed it needs a digital signature (*see MHHS Code of Connection document*) and written to the message header

API Call

The sender has the ability to send multiple event/messages in a single API. Maximum number of records sent in a single call (initial proposal is 50,000). Messages can only be sent to a single message channel within the same API call.

API Response

The message sender will need to process the API response. The HTTP return code will provide the return for the whole transaction and needs to be considered with the response body as it will provide the details for the acceptance or otherwise for each message sent and will provide Transaction Ids for each message referenced by the Sender Unique Reference, details below.

Back Off and Retry

Participants are expected to adopt a retry with exponential back off (up to a configurable maximum wait time) if there is a failure in connecting to the DIP.

Multiple Connections

Participants will be allowed to have multiple connections to the API endpoint. Participants may wish to logically separate their own interfaces and have a single connection per interface and the DIP will support this pattern. In the detailed design phase detailed connection patterns will be described.

4.4.2 Message Structure

4.4.2.1 Common Block

The Sender will need to populate the following blocks on sending a message. The tables detail the validation the DIP will undertake on each of the message fields.

The Sender blocks are split between S0 & S1. Both are fixed formats, however, the S0 block has different enumerated values for each of the respective fields, whilst the S1 blocks does not have this separation. Consequentially, each interface definitions has a bespoke S0 block. Please see the API definitions for the next level of detail.

4.4.2.2 Sender (S0) block (mandatory)

The Sender (S0) block describes:

Field	Description	DIP Validation
Message Interface ID	The interface Id	Check valid interface Id
Event Code	Used to route messages to specific parties	Check Interface Id/Event Code pair is valid
Schema Version	Version of the schema used in the message	Check version is valid for the interface in question.

4.4.2.3 Sender (S1) block (mandatory)

The Sender (S1) block describes:

Field	Description	DIP Validation
Environment	The environment indicator, i.e. PROD, PREPROD, SIT, UIT, DEV	Check environment is in allowed list of values. Check environment is correct for the current instance.

Field	Description	DIP Validation
Sub Text	Optional field used in testing to uniquely identify a set of messages	n/a
Sender Unique Reference	Unique identifier for the event/message provided by the message Sender. See note below that provides guidance on setting this field	Check sender unique reference obeys format specified below
Sent Timestamp	Date/time (UTC) message was sent	Check valid/date, i.e. complies with RFC-3339
Sender ID	The Market Participant who sent the message.	Check valid participant
Sender Participant Role	The capacity in which the message was sent	Check Sender ID/ Sender Participant role is entitled to send message
DIP Connection Provider ID	If message sent by a nominated third-party	Check DIP CP ID/ Sender Participant Role is authorised to send messages on behalf of Sender ID
Sender Correlation Id	Populated when the IF is used in the response to the primary message in the workflow.	Check obeys format

The S1 is mandatory for all messages.

4.4.2.4 Response (R0) block (optional)

Field	Description	DIP Validation
Response Code	Response Code	n/a
Response Message	Response Message	n/a

The response block is only used when the message is a “response” to an initial message, e.g. IF-006 is a response to an IF-005 message (see *MHHSP-DES138 -Interface Catalogue* for the interfaces that require a R0 block), and the Response Correlation Id is that sent in the original message – see section 5.4.

4.4.2.5 Address (A0) block (optional)

Field	Description	DIP Validation
Primary Recipient Id(s)	Used to route messages to targeted parties (Primary Addressing)	Check participant has the corresponding role (permission) to receive message

The A0 block is only populated on an interface-by-interface basis, i.e. not all Interfaces require primary addressing. The interface catalogue (*MHHSP-DES138-Interface Catalogue*) has the corresponding details.

4.4.2.6 Message Body MPAN (M0) block (optional)

Field	Description	DIP Validation
MPAN Core	Used to route messages to specific parties (Secondary Addressing)	
Distributor Id	The market-wide unique reference for the distributor who is responsible for the distribution network that a metering point is connected to.	

Field	Description	DIP Validation
GSP Group Id	Identifies the distinct grid supply point group (physical region of the country) where the metering point is located.	Check valid GSP Id (enumerated values)

The M0 is an optional block

4.4.2.7 Message Body MPAN (M1) block (optional) (IF-019 & IF-020 only)

Field	Description	DIP Validation
Principal MPAN	Used to route messages to specific parties (Primary Addressing)	
Distributor Id	The market-wide unique reference for the distributor who is responsible for the distribution network that a metering point is connected to.	
GSP Group Id	Identifies the distinct grid supply point group (physical region of the country) where the metering point is located.	Check valid GSP Id (enumerated values)

The M1 block is the M0 equivalent on interfaces IF-019 & IF-020 only.

4.4.2.8 Custom Block

The message body will be dependent which interface is being submitted. These definitions are not repeated in this document, instead they can be found in the swagger definitions and *MHHS-DES138-Interface Catalogue*.

4.4.3 DIP Processing (Level 1 Validation)

The purpose of the initial API checks is provide basic syntax checking of the message header to ascertain whether the message is syntactically correct and can be processed further. A 'handshake' return message provides a reference between the message sender's unique reference and the DIP's transaction Id.

The DIP will perform the following for each separate message received. On first error the DIP will abort the transaction and return the corresponding status code and error messages.

- Validation of API key and establish Sender
- Ensure Interface Id is correct
- Schema validation checks are undertaken via the definitions described in the swagger. If schema validation fails on a single message within a transaction then all messages within the transaction are rejected with a '400' code and a MSG1001 message in the response. Some of the checks are undertaken here include:
 - Check message structure, i.e. mandatory blocks are present for the corresponding interface and event code.
 - Check the message validation checks for the common blocks (see message validation above in 4.4.2 for details):
 - Check the environment is set correctly
 - Check Interface Id/Event Code pair is an allowable combination
 - Check the message Schema version aligns (API enumeration defines allowable values)
- The following are undertaken outside the schema validation checks:
 - Check the Sender Id ("logical" sender) is entitled to send message for the Event Channel for the given role

- Check the DIP Connection Provider is entitled to send message on behalf of the "logical" sender for the given role/channel
- Check Sender Unique Reference is formatted correctly and unique
- Generate a Transaction Id (see below)
- Generate a Transaction timestamp, i.e. record the current date/time (UTC)
- If the message channel is configured to generate a Workflow Correlation Id (see below)
- Generate service desk/audit links
- Write the Transaction Id, Transaction timestamp, Workflow correlation Id, status code, status message and audit/service desk links to the response body

The DIP will be enforcing capitalisation checks on message ingress for path names and message structure. Data items within messages are also case sensitive and the DIP will not convert between cases: data will pass through unaltered. This follows OpenAPI standards. Enumeration checks undertaken by the DIP are case sensitive, e.g., for the CommonBlock/S1/environment the term 'PROD' is accepted, whilst 'prod' or 'Prod' are rejected. A significant amount of legacy data items where case is important pass through the DIP and hence the reason why these checks are applied).

Generate return code based on the results of the above checks for the all the messages received in the single transaction.

The list of bespoke response codes are described in the swagger.

4.4.4 Return Code and Response Body

4.4.4.1 Return Code

Each connection will result in a HTTP return code that will indicate the success or otherwise of the complete transaction. The detailed list of expected behaviour and response codes, including any expected retry behaviour is shown in the tables below (be it automatic or manually initiated). The HTTP codes and retry policies attempt to follow, what is considered, standard industry practice. All HTTP response codes are also included in Swagger.

The table below introduces the ingress of messages to the DIP. The automated retry and retry behaviour columns presents the suggested behaviour a participant's system is expected to follow, but not mandated as they will have their own mitigation policies already defined.

DIP Ingress ("Level 1" validation)					
Code	Messages	Automated Retry	Reason	Action	Retry Behaviour
2xx	Successful				
201	Messages Created		Messages successfully received by DIP and passed L1 validation (All messages have a MSG0000 in the corresponding response block)		
207	Some Messages Created	no	Some or no messages are created, i.e. some messages have a MSG0000 message in the corresponding response block, others will have a response code in the range MSG1000 to 1012.	Reform failed messages and resend in new transaction. If problem persists, contact DIP 1st line support	
2xx	Other 200 messages		The DIP will only send 201 or 207 in the successful receipt of messages		

4xx	Client Errors				
400	Bad Request	no	Malformed messages or HTTP Header content.	Reform message to re -align with swagger definitions. If submitting messages in-batch submit in smaller batches to establish problem message. If problem persists contact DIP 1st line support	
401	Unauthorised Error	no	Issues related to Message Signing Certificates, Header problems or Account Issue (this includes any errors related to the X-API Key).	Ensure certificate validity; check cert has not expired. If problem persists, contact DIP 1st line support	after rectifying cert issue reattempt sending messages
403	Forbidden	no	Issues related to TLS Certificates (including authentication failures), alongside other general 403 related issues i.e., could be IP blocking	Contact DIP 1st line support	Retry after new security measures (cert/account) in place
404	Not Found	no	Resource not found	If problem persists, contact DIP 1st line support	Resource could be temporarily unavailable, hence assume a periodic retry
405	Method Not Allowed	no	Requested method unsupported	Contact DIP 1st line support	
406	Not Acceptable	no	Requested method unsupported	Contact DIP 1st line support	
408	Request Timeout	yes	System timeout waiting for resource	If problem persists, contact DIP 1st line support	Adopt an automated back-off and retry algorithm for sending messages.
413	Payload Too Large	no	Request is too large for firewall/gateway	Reduce payload size where possible, if not possible contact support.	retry after dialogue with 1st line support
429	Too Many Requests	yes	Rate limiting in force.	Wait, if symptom persists after cool-off period then contact support	Adopt an automated back-off and retry algorithm for sending messages.
4xx	Other 400 messages		The DIP will send any other 400 messages	Contact DIP 1st line support	
5xx	Server Errors				

500	Internal Server Error	yes	The DIP is aware that it has encountered an error or is otherwise incapable of performing the request	Retry, but if problem persists contact DIP 1st line support	Adopt an automated back-off and retry algorithm for sending messages.
502	Bad Gateway	yes			
503	Service Unavailable	yes			
504	Gateway Timeout	yes			
505	HTTP Version Not Supported	no	Contact support	Contact DIP 1st line support	
5xx	Other 500 messages		The DIP will not send any other 500 messages		

4.4.4.2 Response Body

The response uses the common Standard Response body:

Field	Description
Transaction Id	Unique DIP transaction Id
Sent timestamp	DIP Receipt timestamp
Sender Unique Reference	The original Sender Unique Reference
Sender ID	DIP identified
Correlation Id	Correlation ID relayed back (optional)
Recipient Id	Recipient of the message
DCP Id	DCP (optional)
Message	Information on the message status
Help	Extra help information
Service Ticket URL	URL to SNOW ticket related to the message

The response body of the HTTP call will deliver the Sender a transaction ID and optionally a correlation ID against the Sender's Unique Reference for each message.

If a HTTP Request contained a single IF message and this failed schema validation, then we might see a response body that looks like the following example:

HTTP/1.1 207 Multi-status

Content-Type: application/sendEvent.api+json

```
{ "dipchannel": { "version": "1.0" },
```

```

{
  "messageArray": [
    {
      "transactionId": "",
      "senderUniqueReference": "",
      "correlationId": "",
      "sentTimestamp": "2022-03-21T19:05:00+00:00",
      "senderId": "",
      "recipientId": "",
      "DIPConnectionProviderId": null,
      "message": "MSG1001 – Schema Validation Failure",
      "help": "Message is malformed and failed to complete schema Validation ",
      "serviceTicketURL": "https://<baseURL>/nav_to.do?uri=<table name>.do?sys_id=-1%26sysparm_query=<field=value>"
    }
  ],
  "timestamp": "2022-03-21T19:05:00+00:00"
}

```

If a HTTP Request contained 2 IF messages and both passed schema and data validation, then we might see a response body that looks like the following example:

HTTP/1.1 201 Created

Content-Type: application/sendEvent.api+json

```

{ "dipchannel": { "version": "1.0" },
  {
    "messageArray": [
      {
        "transactionId": "T-IF-006-1234567890-SUP-20220401-1234CC0123456789",
        "senderUniqueReference": "S-IF-005-0345890082-SUP-20222313-12345687A",
        "correlationId": "CI-20220401-1234567890123abce123092",
        "sentTimestamp": "2022-03-21T19:05:00+00:00",
        "senderId": "10000000",
        "recipientId": "1009012345",
        "DIPConnectionProviderId": null,
        "message": "DIP0000 Message OK ",
        "help": "",
        "serviceTicketURL": "https://<baseURL>/nav_to.do?uri=<table name>.do?sys_id=-1%26sysparm_query=<field=value>"
      },
      {
        "transactionId": "T-IF-006-1234567890-SUP-20220401-1234CC0123456123",

```

```

"senderUniqueReference": "S-IF-005-0345890082-SUP-20222313-12345687b",
"correlationId": NULL,
"sentTimestamp": "2022-03-21T19:05:00+00:01",
"senderId": "10000000",
"recipientId": "1009012345",
"DIPConnectionProviderId": null,
"message": "Message OK ",
"help": "",
"serviceTicketURL": "https://<baseUrl>/nav_to.do?uri=<table name>.do?sys_id=-1%26sysparm_query=<field=value>"
}
],
"timestamp": "2022-03-21T19:05:00+00:00"
}

```

If a HTTP Request contained 2 IF messages and both passed schema validation, but one failed data validation, then we might see a response body that looks like the following example, returning a HTTP Code 207:

HTTP/1.1 207 Multi-status
Content-Type: application/sendEvent.api+json

```

{"dipchannel": {"version": "1.0"},
{
"messageArray": [
{
"transactionId": "T-IF-006-1234567890-SUP-20220401-1234CC0123456789",
"senderUniqueReference": "S-IF-005-0345890082-SUP-20222313-12345687A",
"correlationId": "CI-20220401-1234567890123abce123092",
"sentTimestamp": "2022-03-21T19:05:00+00:00",
"senderId": "10000000",
"recipientId": "1009012345",
"DIPConnectionProviderId": null,
"message": "MSG0101 Application 101 error message",
"help": "Sender Unique reference must take the format S - Interface Id - Participant Id - Role Id - Date - Sequence (hex)/Participant Ref, e.g., 'S-IF-005-0345890082-SUP-20222313-12345687a'",
"serviceTicketURL": "https://<baseUrl>/nav_to.do?uri=<table name>.do?sys_id=-1%26sysparm_query=<field=value>"
},
{
"transactionId": "T-IF-006-1234567890-SUP-20220401-1234CC0123456123",
"senderUniqueReference": "S-IF-005-0345890082-SUP-20222313-12345687b",
"correlationId": NULL,
"sentTimestamp": "2022-03-21T19:05:00+00:01",

```

```

"senderId": "10000000",
"recipientId": "1009012345",
"DIPConnectionProviderId": null,
"message": "DIP0000 Message OK",
"help": "",
"serviceTicketURL": "https://<baseURL>/nav_to.do?uri=<table name>.do?sys_id=-1%26sysparm_query=<field=value>"
}
],
"timestamp": "2022-03-21T19:05:00+00:00"
}

```

4.5 Message Compression Handling

Message compression is used in the ECS reports & LDSO E-Bill Interfaces to ensure that the report size is within a notional upper limit for the size of messages accepted by the DIP provider, as well as ECS reports received by upstream & downstream participants. This message pattern for compressed payload involves using gzip to compress the data, then base64 encode the data. The reverse is true for decompression.

This new pattern for compressed payloads will be introduced for the following reports:

- REP-002 Supplier report for DUoS – aggregated data
- REP-002A Embedded Network report for DUoS – aggregated data
- REP-002B LDSO report for DUoS – aggregated data
- REP-003 BM Unit Allocated Demand Volumes to Market Participants
- REP-003A Aggregated BM Unit Allocated Demand Volumes to Supplier
- REP-004 Supplier Deemed Take Report
- REP-006 Aggregated Uncorrected volumes by CCC to Market Participants
- REP-007 VAS Exception Report to Suppliers and BSCCo
- REP-008 MDS Exception Report to LDSOs
- REP-009 EMRS Report for Suppliers
- REP-900 LDSO – DUoS E-Bill
- REP-901 LDSO - Aggregated DUoS Charges

Messages currently comprise of two blocks – a CommonBlock and a CustomBlock. Compression and Decompression are concerned with the data contained within the CustomBlock.

4.5.1 Compression Steps

The following steps happen for compression as follows:

- The sender compresses the contents of the CustomBlock of the report using GZIP.
- The sender takes this compressed data and then BASE64 encodes the data.
- The sender takes this BASE64 encoded data and inserts this into the (empty) CustomBlock (P03 property as below)

Any data / schema validation should be completed by the sender prior to data compression steps above. Message processing continues as with other interfaces and the CommonBlock / HTTP Header is not changed. Message signing will take place on message payload post data compression.

In the Swagger definition, the Custom Block for the ECS reports contains the following

- P03 property – to be used for the compressed payload following the instructions above

- Schema property - this is the uncompressed message to be used for validation. This will not be populated / contain any data at runtime.

4.5.1 Decompression Steps

The recipient will know that a specific message flow is compressed, and hence will need to decompress the payload. The following steps happen for decompression as follows:

- The receiver BASE64 decodes the contents of the CustomBlock (P03 property as per previous section)
- The receiver takes this BASE64 data and decompresses using GZIP.
- The receiver will now have the decompressed payload for validation and onward processing.

Any data / schema validation should be completed by the receiver after the data compression steps above. Message processing continues as with other interfaces and the CommonBlock / HTTP Header is not changed. Message signing will take place on message payload pre data de-compression.

4.6 Receive Messages Webhook

A Market Participant's webhook can either be configured within the DIP UI, or via the API call to register the webhook - <https://api.{environment}.energydataintegrationplatform.co.uk/{version}/dip-channel/{id}/pubconfig/recipient-id>). Either can be used to register the webhook that will be used to relay publication events/messages from the DIP to the corresponding message recipient.

The latest version of the full Open API definition can be found here <https://app.swaggerhub.com/apis/MHHSPPROGRAMME>.

The API call can either register a new webhook, remove or replace an existing webhook.

The webhook for each message channel (publication) needs to be registered separately. The receiving Participant has the option of defining multiple callbacks (one for each publication) or a single callback for the receipt of all messages (which would need to be registered on each channel). It is the receiving Participants responsibility to ensure that all publications they are due to receive are covered by all the callbacks registered.

The messages within a single callback can have mixed MPANs.

The return code and response body of the callback API will provide the receiving Participant with an auditable trace on the success of sending the messages by the DIP.

If the webhook request has originated from a DIP Connection Provider the DIP will check that the DIP Connection Provider is authorised to receive messages on behalf of the logical recipient.

4.6.1 Path Parameters

The API has the following path parameters:

- The message channel Id the corresponding webhook needs to service, eg. IF-001
- The DIP ID of the message recipient, eg. 1001012345

4.6.2 Callback Request structure

The callback request will have the following properties:

- the URL for the callback. The URL should not specify a port number as all comms are through standard http ports, i.e. 443 for https.
- the maximum number of messages the recipient can receive in a single transaction
- the maximum payload size - the payload size sent in the callback (from the DIP to the MP) will not exceed this limit. This limit is ignored (by the DIP) if a single message cannot be transmitted.

A worked example can be seen below, that shows a different number of messages / message sizing scenarios and how the DIP combines these messages for a market participant to process.

Message Size	No. of Messages	Max Payload Size (defined by MP)	Outcome Example (from DIP to MP)	Transaction Sizes							
				Transaction 1	Transaction 2	Transaction 3	Transaction 4	Transaction 5	Transaction 6	Transaction 7	
100kb	3	1000kb	Messages pushed after [XX]ms wait	300kb							
100kb	13	1000kb	10 messages pushed out instantly 3 message pushed after the initial transaction completes	1000kb	300kb						
400kb	3	1000kb	2 messages pushed out instantly 1 message pushed after the initial transaction completes	800kb	400kb						
1300kb	1	1000kb	1 message pushed after [XX]ms wait	1300kb							
1300kb	7	1000kb	7 messages pushed as separate messages after [XX]ms wait	1300kb	1300kb	1300kb	1300kb	1300kb	1300kb	1300kb	1300kb
5000kb	1	1000kb	1 message pushed after [XX]ms wait	5000kb							

4.6.3 DIP Responsibilities

On sending a set of events/messages the DIP will undertake the following:

Message Construction

The DIP will augment the original message with the added information detailed below in section [4.6.44-5.2](#).

API Call

The DIP will call the API declared in the callback. Initially the maximum number of records sent in a single call will be set to 50,000, however, this value will be under review, or the maximum number specified in the callback request. Only messages on the same messages channels will be sent in the same API call. Also, the payload size will not exceed the size specified in the call back request: the DIP will collate all outstanding messages on the channel and if there is a message that exceeds the limit requested, then that message will be sent in the next transaction.

API Response

The DIP will need to process the callback response. The HTTP return code will provide the return for the whole transaction and needs to be considered with the response body as it will provide the details for the acceptance or otherwise for each message (see below for response code).

Back Off and Retry

The DIP will adopt a retry with exponential backoff approach (up to a maximum wait time) and introduce additional "circuit breakers" to ensure efficient handling of broken connections to Market Participants.

4.6.4 Message Structure

4.6.4.1 Common Block

The common block described above in the sendEvents API will be augmented with the D0 block which is added to the message by the DIP.

4.6.4.2 Interface (S0) block (Mandatory)

Contains specific information regarding the message channel of the message.

Field	Description	Validation
Message Interface ID	The interface Id	Check valid interface Id
Schema Version	Version of the schema used in the message	Check version is valid for the environment
Event Code	Used to route messages to specific parties	Check Interface Id/Event Code pair is valid

4.6.4.3 Sender (S1) block (Mandatory)

Contains Sender specific message information.

Field	Description	Validation
Environment	The environment indicator, i.e. PROD, PREPROD, SIT.	Check environment is correct
Sub Text	Optional field used in testing to uniquely identify a set of messages	n/a
Sender Unique Reference	Unique identifier for the event/message provided by the message Sender. Setting is this value is described below.	Check format meets specification
Sent Date/time	Date/time (UTC) message was sent	Check valid/date
Sender ID	The Market Participant who sent the message.	Check valid participant
Sender Participant Role	The capacity in which the message was sent	
DIP Connection Provider ID	If message sent by a nominated third-party	

4.6.4.4 DIP (D0) block (Mandatory)

The DIP adds to the D0 block to the common block.

Field	Description
Transaction Id	Unique DIP transaction Id -
Transaction timestamp	DIP Receipt timestamp
Publication Id	Publication ID
DIP Correlation Id	Provides unique identification for a specific workflow instance. Only set for those channels where a correlation ID is required – see section 3.4
Replay Indicator	If set, then message has arrived through a replay request rather than a standard message
Service Ticket URL	URL to create/view appropriate service ticket

4.6.4.5 Response (R0) block (optional)

Sender populated, dependent on message channel (see *MHHSP Interfaces Catalogue*)

Field	Description	Recipient Validation
Response Code	Response Code	Check response code is valid for the Interface
Response Message	Status/Error Message	

4.6.4.6 MPAN (M0) block (optional)

Field	Description	Recipient Validation
MPAN Core	Used to route messages to specific parties (Secondary Addressing)	
Distributor Id	The market-wide unique reference for the distributor who is responsible for the distribution network that a metering point is connected to.	

Field	Description	Recipient Validation
GSP Group Id	Identifies the distinct grid supply point group (physical region of the country) where the metering point is located.	Check valid GSP Id (enumerated values)

4.6.4.7 Custom Block

The message body will be dependent which interface is being submitted. These definitions are not repeated in this document, instead they can be found in the swagger definitions and *MHHSP Interfaces Catalogue*.

4.6.5 Recipient Responsibilities

On receipt of a batch of messages the Recipient will need to validate those messages. Validation is split into two phases: Synchronous (Level 3) and Asynchronous (Level 4) validation. Where validation occurs, either at L3 or L4, is down to the discretion of the Recipient. It is recognised that different Recipients will design their interfacing systems differently, hence, the responses can either be synchronous (L3) or asynchronous (L4).

The expectation is that the Recipient will undertake some initial validation checks and probably employ schema validation checks on their own gateway. At this point the transaction has not been deserialised and individual messages not recognised within the payload; hence if an error is encountered then the whole transaction is rejected with at 400 response code. At this juncture no transaction Id would be quoted back in the response.

Once the initial checks have been undertaken and the individual messages identified then the processing and reporting can be undertaken at message level. These subsequent checks are more likely to be L4 checks.

The orchestration is described further in section 5.1. Validation checks that recipient systems will need to undertake are described in the *MHHSP Interfaces Catalogue (DES 138)*.

If the Recipient is receiving the event/message through a replay request then the subsequent downstream processing and subsequent reply needs to be cognisant that the event/message may have already been processed.

4.6.6 Callback Response

The callback response contains the outcome of the Level 3 validation undertaken by the recipient, the return code the result of the overall transaction and the response body details of the individual messages/events.

4.6.6.1 Return Code

Each connection will result in a HTTP return code that will indicate the success or otherwise of the complete transaction. The full list of response codes is available in the swagger definition. The table introduces the egress of messages to the DIP. The automated retry and retry behaviour columns presents the pattern of behaviour that the DIP will undertake in the event of an error code.

DIP Egress; i.e. webhook ("Level 3" validation)						
Code	Messages	Retry	Reason	Action	Retry Behaviour	Notify Sender via a status Message
2xx	Successful					
201	Messages Created		Messages successfully received by Recipient and passed L3 validation.			
207	Some Messages Created	No	Some messages successfully received by Recipient and passed L3 validation.	The DIP will automatically send status messages for		Yes; those messages failing validation

				those messages failing validation		
2xx	Other 200 messages		Participant systems should only send 201 or 207 messages			
4xx Client Errors						
400	Bad Request	no	Malformed messages or HTTP Header content.	The DIP will automatically send status messages for those messages failing validation		Yes
401	Unauthorised Error	no	Issues related to Message Signing Certificates, Header problems or Account Issue (this includes any errors related to the X-API Key).	Ensure certificate validity; check cert has not expired. If problem persists contact DIP 1st line support	If participant believes issue is fixed then request messages to be resent via DIP replay	No
403	Forbidden	no	Issues related to TLS Certificates (including authentication failures), alongside other general 403 related issues i.e., could be IP blocking	Contact DIP 1st line support	If participant believes issue is fixed then request messages to be resent via DIP replay	No
404	Not Found	no	Resource not found	Resource could be temporarily unavailable, hence assume a periodic retry. If problem persists contact DIP 1st line support	If participant believes issue is fixed then request messages to be resent via DIP replay	No
405	Method Not Allowed	no	Requested method unsupported	Assume significant issue with participant system. Contact DIP 1st line support	If participant believes issue is fixed then request messages to be resent via DIP replay	Yes
406	Not Acceptable	no	Requested method unsupported	Assume significant issue with participant system. Contact DIP 1st line support	If participant believes issue is fixed then request messages to be resent via DIP replay	Yes
408	Request Timeout	yes	System timeout waiting for resource		The DIP will adopt a retry with an exponential back-off whilst attempts to rectify the issue are made	No

413	Payload Too Large	no	Request is too large for firewall/gateway	Participant can reduce size of webhook callback via API/portal. If still unsuccessful contact 1st line DIP support	If participant believes issue is fixed then request messages to be resent via DIP replay	No
429	Too Many Requests	yes	Rate limiting in force.	Assumption is that the participant system has implemented some rate limiting on their gateway	The DIP will adopt a retry with an exponential back-off	No
4xx	Other 400 messages		The DIP is not expecting to receive any other 400 message	Contact DIP 1st line support		
5xx Server Errors						
500	Internal Server Error	yes	The DIP is aware that it has encountered an error with the Participant system.	Contact DIP 1st line support	The DIP will adopt a retry with an exponential back-off whilst attempts to rectify the issue are made	No
502	Bad Gateway	yes				
503	Service Unavailable	yes				
504	Gateway Timeout	yes				
505	HTTP Version Not Supported	no	Contact support			
5xx	Other 500 messages		The DIP is not expecting to receive any other 500 message			

4.6.6.2 Response Body

The response uses the common Standard Response body:

Field	Description
Transaction Id	Unique DIP transaction Id
Sent timestamp	DIP Receipt timestamp

Field	Description
Sender Unique Reference	The original Sender Unique Reference
Sender ID	The Sender of <i>this</i> message, i.e. the recipient of the incoming message.
Correlation Id	Correlation ID relayed back (optional)
Recipient Id	Recipient of the message, i.e. Recipient of this message most likely to be the Sender of the corresponding incoming message. If a generic DIP issue, then the recipient is the DIP
DCP Id	DCP (optional – used if the Sender uses a DCP)
Message	Information on the message status
Help	Extra help information
Service Ticket URL	URL to SNOW ticket related to the message

Where a field is not written/available/optional, then a null value needs to be written.

4.6.6.3 Response Body

The response body of the HTTP call will deliver a response back to DIP indicating the success or otherwise of processing each message received.

In the example below, two messages are received, the first accepted and the second rejected:

```

HTTP/1.1 207 Multi-status
Content-Type: application/recvieEventCallback+json
{"recvieEventCallback": {"version": "1.0"},
"events": [
{
"transactionId": "T-IF-006-1234567890-SUPP-20220401-1234CC",
"sentTimestamp": "2022-03-21T19:05:00+00:00",
"senderId": "1009012345",
"recipientId": "1009012346",
"message": "RCP0000 ok ",
"serviceTicketURL": "https://<baseURL>/nav_to.do?uri=<table name>.do?sys_id=-1%26sysparm_query=<field=value>"
},
{
"transactionId": "T-IF-006-1234567890-SUPP-20220401-1234DE",
"sentTimestamp": "2022-03-21T19:05:01+00:00",
"senderId": "1009012345",
"recipientId": "1009012346",
"message": " REG1020 Meter Install Date [DI-057] cannot take place in the future"
"help": " Meter Install Date [DI-057] cannot take place in the future ",
"serviceTicketURL": "https://<baseURL>/nav_to.do?uri=<table name>.do?sys_id=-1%26sysparm_query=<field=value>"
}
]

```

```
}  
}  
}
```

4.7 Send Status Messages API

The Send Status Messages API is used to submit status messages, i.e. the results of level 4 validation, to the DIP. The latest version of the full Open API definition can be found here <https://app.swaggerhub.com/apis/MHHSPPROGRAMME>

The sending Participant can send an array of status messages (configurable – initial limit set to 50,000).

The return code and response body provides the sending Participant with an auditable trace on the success of the receipt of the messages by the DIP.

4.7.1 Status Message Structure

The format of the incoming message has the structure:

Field	Description	Mandatory/ Optional
Transaction Id	Transaction Id of the original message the DIP	M
Sender Unique Reference	Sender Unique Reference of the original message	O
Correlation Id	Correlation Id of the original messages (where available)	O
Sent Timestamp	Sent timestamp of the Status Message	M
Sender Id	Logical Sender of the Status message	M
Recipient Id	Recipient of the Status message, which will in most cases be the Sender of the original message	M
DIP Connection Provider Id	Physical sender of message (where different to Sender id)	O
Message	Information regarding subject of message	M
Service Ticket URL	URL to create/view appropriate service ticket	O
Help	Help text	O

4.8 Receive Status Messages Webhook

The Receive Status Messages API is used to receive status messages from the DIP that either been produced by the DIP, or the DIP is passing through from another Participant. The latest full Open API definition can be found here

<https://app.swaggerhub.com/apis/MHHSPPROGRAMME>

The Market Participant/DCP will need to register the webhook for the messages sent to a corresponding DIP Id that is under its control.

The Participant webhook will be able to receive an array of status messages (up to 50,000).

The return code and response body provides the sending Participant with an auditable trace on the success of the receipt of the messages by the DIP.

The message structure is the same as defined in section [4.7.14-6.1](#).

4.9 Replay Events

Where Market Participants have lost any messages (following successful delivery previously), or to support Market Participants to recover from a system failure (alongside several other scenarios), the Replay Events functionality will enable Market Participants to retrieve messages from the DIP archive.

The latest version of the full Open API definition can be found here:
<https://app.swaggerhub.com/apis/MHSPROGRAMME>.

Two different APIs are available: Replay API and Requeue API. The Replay API will return the messages directly from the API call, whilst the Requeue API will place the messages on the queue to be pulled by the corresponding webhook.

The furthest a query can retrieve data is dependent upon the retention time set with each message channel (the default retention is 2 years).

The Participant can make a single request to return an array of events (50,000). The message will contain data i.e., timestamps as per the original submission.

The original Recipient DIP Id needs to be specified as the DIP will need to ascertain which messages the participant is able to replay. This Replay Events functionality will also be available via the DIP Portal to manually request a replay.

4.9.1 Query Parameters

The Replay Events query parameters are:

- Message Channel
- Message Recipient DIP ID

Message request object contains::

- Event Code (optional)
- MPAN
- Transaction IDs – array of message Transaction Ids to replay, or
- Date/time from – transaction time from which the first message needs to be replayed.
- Date/time to (optional) – transaction time message to be replayed
- Version – message version (optional)

The replayed message will have the same structure as the message received via the webhook, hence in addition to the message body and Sender message blocks (P0, M0) (sender) and message will also have the added the amended D0 block.

There will be two methods by which the Event Replay facility can be initiated:

- Through the UI interface on the DIP
- Through an API Call

As well as being delivered via a separate API, the event replay will deliver the message under a new transaction wrapper with a Transaction ID and Correlation ID (with a reply prefix) so that the event/message are identified as a replayed, and hence downstream processes are not triggered. The initial message transaction wrapper will also be sent. Only messages the Participant is entitled to view will be sent.

Participants need to be aware where messages are replayed from archive that message payloads are replayed in the schema version that they were originally submitted in, i.e. the messages are not "uplifted" to the current live format when replayed. Hence, participants requiring full replay facilities will need message gateways and software that have multi-version support for message ingress during replay. Also, please see section 8.5 below on version control.

5 Message Choreography

5.1 Simple Message Exchange

The following diagrams describe the 6 different scenarios that can occur on a simple message exchange between a single DIP Participant service and the DIP and include all the different levels of validation.

For diagram clarity, the step showing message being written to the DIP archive are not shown on any of the diagram below.

The diagrams only show a simple scenario where a single message is exchanged between Sender and the DIP, and then relayed by the DIP to recipient. Where multiple messages are exchanged and a mixed response is described in section 5.3

5.1.1 Standard Exchange

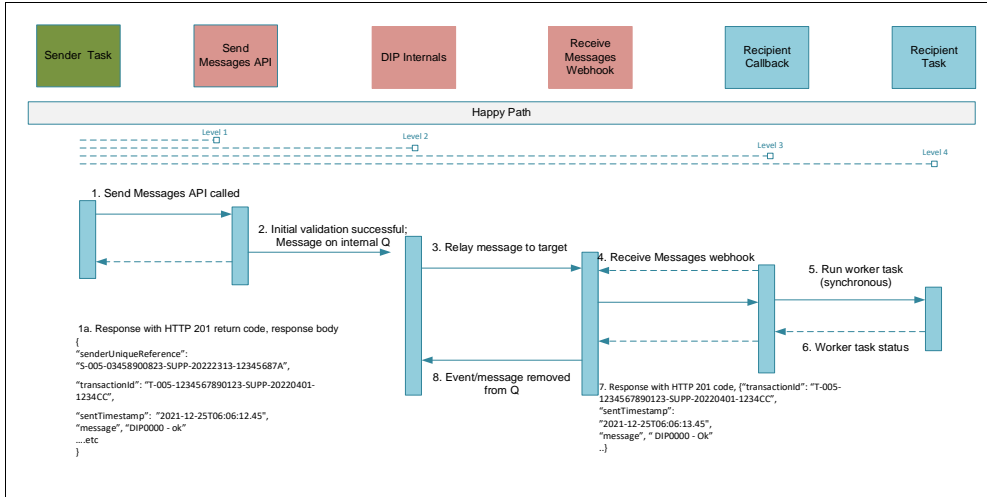


Figure 5 – Standard Exchange

In this exchange the message recipient will only receive the initial synchronous acknowledgement from the DIP (Level 1 validation), there is no acknowledgement from the recipient of the message back to the Sender. However, there is an acknowledgement from the Recipient to the DIP (Level 3 validation) for the message but this is not relayed back to the Sender. This follows the principle that only processing and data errors are returned to the Sender, and successful processing is not routinely reported.

Both synchronous responses, initially by the DIP on the initial API call (steps 1&1a above) and the webhook API call back (steps 4&7) are logged in the DIP to meet the audit requirements.

Message auditing logging is not shown. The audit trail is available to sender via a DIP report.

5.1.2 Level 1 validation - DIP Synchronous rejection

In the scenario where a message is synchronously rejected by the DIP, in the example below the message has been rejected as the Sender does not have the privilege to send messages on Interface IF-006, the response body clearly states the sender is not allowed to send messages on IF-006.

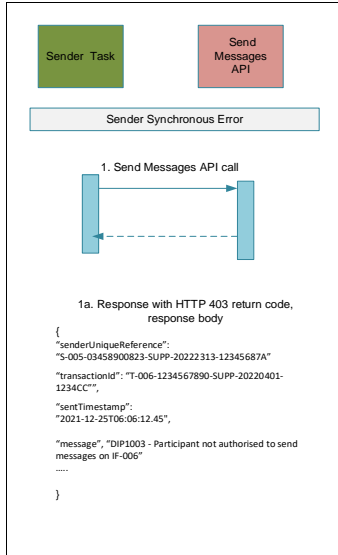


Figure 6 – Level 1 DIP Synchronous Error

5.1.3 Level 2 validation - DIP Asynchronous rejection

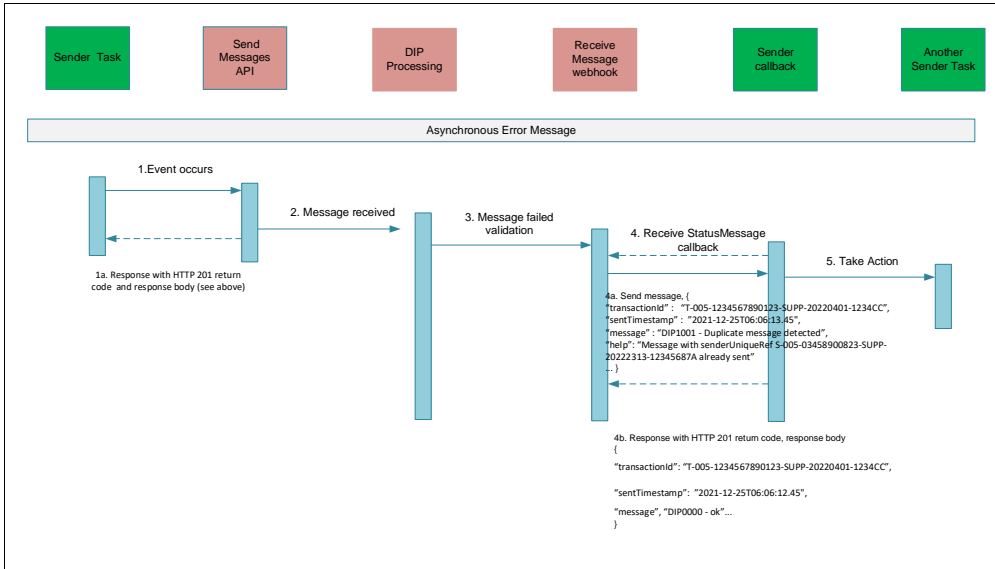


Figure 7 Level 2- DIP Asynchronous Error

After the initial successful receipt of the message the DIP encounters an error with a Sender's message, in this example the DIP finds the signature invalid. The DIP informs the Participant of the problem, a message is sent back via the Status Message webhook, with return message containing the Transaction Id, an error code and a description of problem. The webhook call back responds that the status message has been received and the sender will need to take some action accordingly.

5.1.4 Level 3 response - Recipient Synchronous Error (with retry)

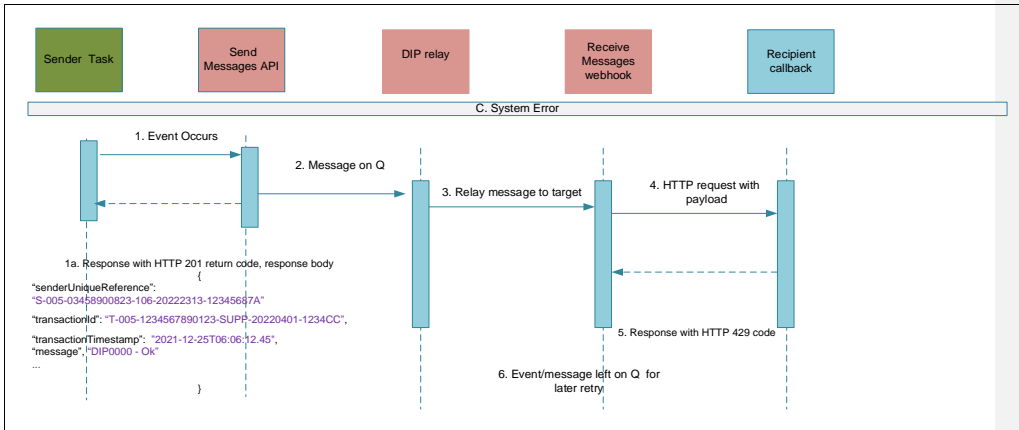


Figure 8 – Level 3 - Recipient Synchronous Error (retry)

Recipient Synchronous Error with retry where the response from the recipient webhook indicates a system error, e.g. with an HTTP 429 Too Many Requests response. The message has not been consumed and is retained in the queue for later processing. The DIP will have the logic to attempt to resend the message after a timeout period.

If the message is still not sent after a maximum retry period has elapsed then the message is moved to the Dead Letter Queue (DLQ) – see section [5.1.95-1.8](#).

5.1.5 Level 3 validation - Recipient Synchronous Response (no-retry)

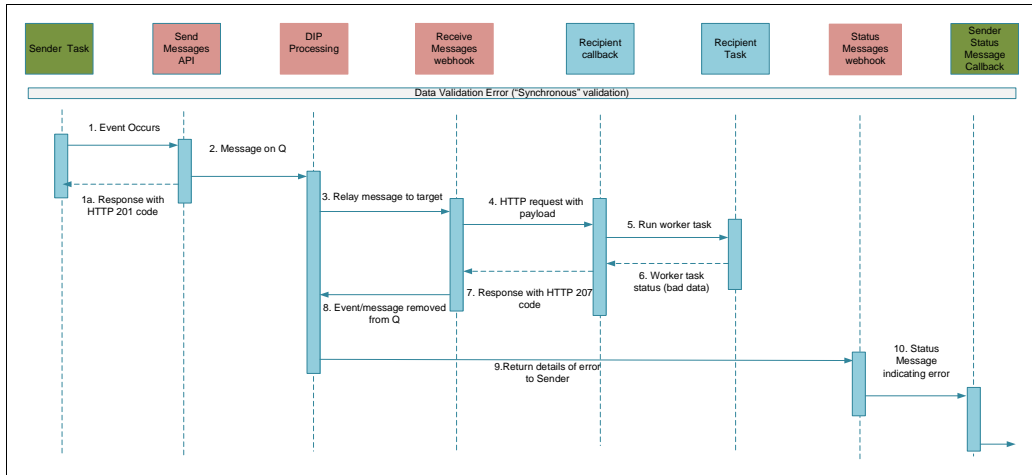


Figure 9 - Recipient synchronous Error (no-retry)

Recipient Synchronous Error with no-retry is the case where the recipient's system rejects the message via the webhook call, i.e. the message has been consumed and rejected. In this scenario, the webhook reports a mixed/error return, and the DIP relays the error received from the Receive Messages webhook back via the Status Messages webhook to the originating party and the message is removed from the outbound queue.

5.1.6 Level 4 validation - Recipient Validation Response (Asynchronous)

In this scenario the recipient of the message discovers an error with the message and needs to report the response back to the Sender. i.e. the recipient's system can consume the data, however, there is an inconsistency with the data which is not reported on the initial call back. The initial message exchange is identical to the standard use case described above (see 5.1.1), however there is an additional message sent back via the Send Status Message API.

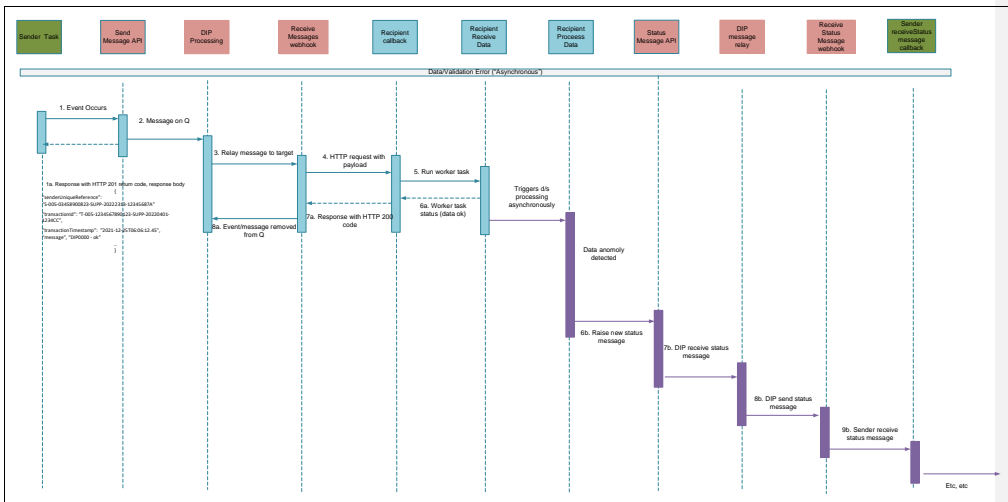


Figure 10 - Recipient Data Error - Asynchronous reporting

5.1.7 Consumption Replay

Message Channels 15 & 16 are used for the replay of historic consumption data and do not follow the standard design pattern of the other message channels. Channels 15 & 16 perform a request / response type of exchange where the initial message via Interface 15 is a request for historic consumption data which the DIP received and processes. The DIP will search the message archive for the requested data and send the corresponding messages back via Publication 16.

This transaction is only available to Advanced Data Services. All consumption records (IF-021 / IF-013) submitted/received by previous Advanced Data Services for a period of four months prior to SSD will be replayed.

The rationale for splitting into two channels is due to the different formats of the incoming request and the outgoing messages containing consumption data.

5.1.8 Pattern 'B' Message flow

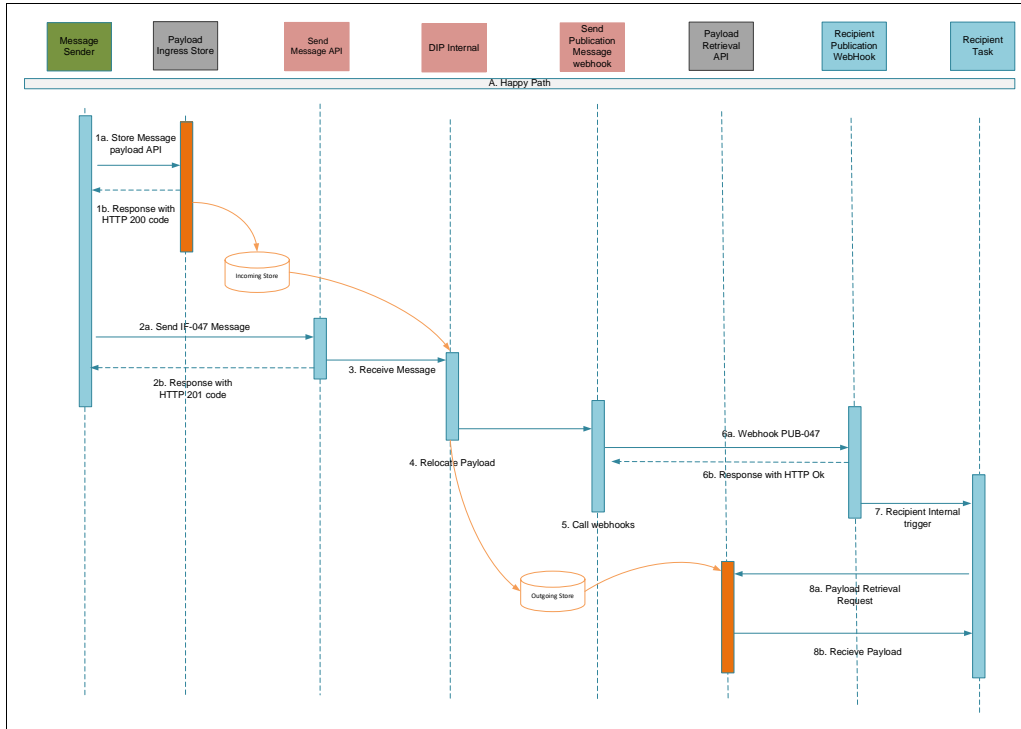


Figure 11 - Message Pattern 'B' Orchestration

In the DIP Functional Specification (*Reference MHHSP-DIP001-Functional Specification v2.0, 6 May 2022*) the concept of message pattern 'A' and Message Pattern 'B' was introduced. Pattern 'B' is an extension of pattern 'A' where the payload is initially written to a URI, and then the intended recipients of the payload are sent a message via the IF-047 interface to communicate the location of the payload to Market Participants. There are two distinct variants for Pattern 'B': DIP hosted payloads (where access controls are required) and public payloads (no access controls required).

The orchestration sequence for Pattern B (DIP hosted) is presented above.

1. Sending MP copies payload to storage account on DIP; response message details the location of the payload
2. Sending MP writes an IF-047 message to the DIP with the details of the uploaded payload.
3. DIP receives message
4. DIP moves payload to destination folders for consumption by receivers
5. DIP calls recipient callback with PUB-047 message
6. Recipient webhook receives PUB-47 message and issues acknowledgment
7. Recipient internal trigger activate payload retrieval API
8. Receiving MP retrieves payload from storage account

With the public payload version, the first step is omitted, and it's the responsibility of the Sending MP to host the message payload and provide the required access.

Market Participants will also query the data store (identified by a URI within the message contents) to see current and past payloads. This will also enable anonymous access to the data store, and a facility to download current and past payloads is also available.

The ingress and egress files will be held as blobs within Azure storage accounts. Authorisation to the accounts will be achieved via the use of the same client certificates that are used for message exchange. The transfer of files from Market Participant systems to the DIP storage account can be achieved via the use of the azcopy utility.

5.1.9 Recipient Timeout & Dead-Letter Queue Handling

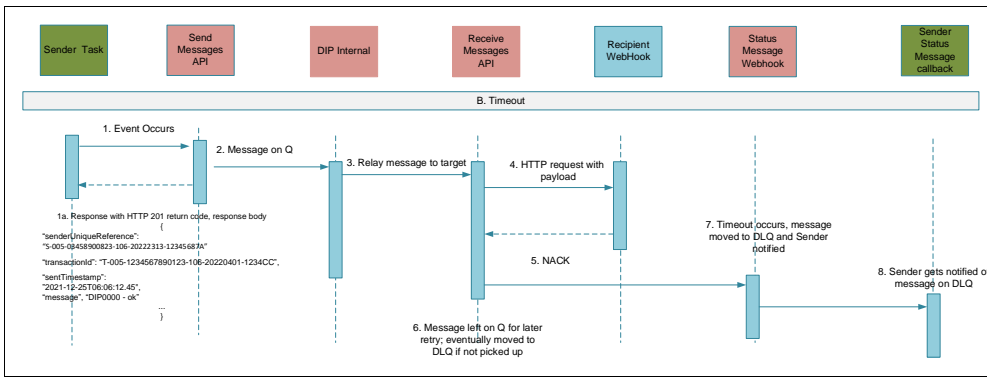


Figure 12 – Recipient Timeout

Timeout – above shows the case where there has been no response from the recipient webhook at the call back times out. The message is retained in the queue for later processing. The DIP will have the logic to attempt to resend the message after a timeout period.

Once a message/event has not been retrieved by a Recipient the DIP will write the message to a dead letter queue (DLQ). Messages on the DLQ will be reported back to the message's sender via the Status Message webhook (section [4.84.7.](#))

5.2 Error Handling & Message Distribution Patterns

This section describes the different message distribution patterns together with some general principles in message validation and how potential discrepancies between recipients are resolved. This is just an initial view, more details on this will be provided in the *DIP Operational Handbook* once the detailed design has progressed.

The majority of the DIP message flows originate from either the Registration system(s) or the ECS systems (MDD, LSS, ISD) and the principle adopted is that these systems are considered to be the "System of Truth" in the message exchanges, and hence discrepancies are raised by DIP Participants that either send or receive messages to/from these services.

Most of message exchanges via the DIP do not involve a simple message being sent from a sender to a single recipient. Depending on the addressing requirements of each message channel (see *MHHS-E2E003-Physical Interface Specifications* for the requirements for each interface) messages are often sent to multiple recipients. This asks the question regarding message validation and what happens in the event of a discrepancy between message recipients.

All the patterns assume that the original message has been consumed by one or more recipients, and the recipient has sent a Status Message back to the Sender via the DIP detailing the issue with the data.

Pattern	Description	Interfaces	Validation resolution
MD#1 Registration In	A single DIP Participant sends a message solely to the Registration Service	IF-005, IF-007, IF-025, IF-031, IF-034, IF-038	Registration will send validation errors back to the Sender. Sender will aim to correct data and resend; if Sender considers the data to be correct then raise support ticket on Registration.
MD#2 Registration Out	The registration service sends out a broadcast message, typically a confirmed update from the Registration system, to many DIP Participants	IF-001, IF-002, IF-006, IF-008, IF-009, IF-018, IF-026, IF-032, IF-033, IF-035, IF-036, IF-037, IF-039, IF-043, IF-044, IF-045, IF-050	Registration data is considered correct. If participant interface raises an error, they will need to track the error via the DIP. Check if other DIP Participants have raised an error on the message. If sender still considers there is an issue with the data then raise a support ticket on Registration (or update existing ticket)
MD#3 ECS Out (LSS, MDS, ISD, VAS)	One of the ECS services (LSS, MDS, ISD, VAS) sends out a broadcast message to multiple DIP Participants	IF-013, IF-014, IF-022, IF-023, IF-040, IF-047	LSS, MDS, VAS, ISD data are considered correct. If participant raises an error, they will need to track the error via the DIP. Check if other DIP Participants have raised an error on the message. If sender still considers there is an issue with the data then raise a support ticket on LSS/MDS/VAS/ISD (or update existing ticket)
MD#4 IF-021	The Half Hourly consumption data interface is considered separately	IF-021	With IF-021 the default position is that the responsibility will be for the SDS to send correct data. Hence, if an error message is received from MDS then the SDS must take initial responsibility to trace the issue. If IF-021 is rejected by another party than the SDS then the onus is on that party to pursue any action, i.e. raise a support ticket, noting they should establish whether the MDS successfully received the same data via the DIP audit trail.

MD#5	Point-to-Point	Messages between two single DIP Participants	IF-024, IF-027, IF-028, IF-004	With point-to-point interfaces the onus will again be on the recipient to raise any issues with errors detected in the message exchange.
MD#6	Request	Participant sends a data request to the DIP (normal BAU, not event replay)	IF-015	In the event of an error being returned by the DIP, the onus is on the Sender to raise a support ticket if they see no issues with the original request.
MD#6	Response	Participant receives a data request to the DIP (normal BAU, not event replay)	IF-016	In the event of an error being returned by the DIP, the onus is on the Sender to raise a support ticket if they see no issues with the original request.

5.3 Batch Message Handling

For ease of understanding the examples in section 5.1 describe the processing of individual messages rather than a group of messages. In practice participants will send batches of messages rather than individual messages via the Send Messages API and the callback from receive events webhook will routinely send multiple messages within a single HTTP transaction. In this scenario the course of individual messages will follow the sequences above, however, as each connection can only result in a single HTTP return code that will indicate the success or otherwise of the complete transaction and this be reflected as follows:

Response	Meaning
201 – Created	All messages created
207 – Multi status	Some messages created; see response body for details
4xx/5xx	See swagger definitions

Figure 13 - HTTP Response Codes for Batch Messages processing

In addition the DIP will undertake schema validation on the whole batch of messages rather than individual messages, and hence, if there is a validation issue with a single message in a group then the whole transaction will fail and no messages are accepted. The DIP will respond with a 403 response and a MSG1001 code.

5.4 Workflow Message Handling

The message flows described above in section 5.1 are for a single instance of a message over an interface/publication along with acceptance/rejection paths for that messages. For the workflows, described in section 3.4, an instance of each workflow will comprise of a series of messages with the receipt of one message triggering a processing step that will result in subsequent message. In order to link a single thread of a workflow process, the Workflow correlation Id is used.

The Workflow correlation Id is generated by the DIP on receipt of the first message in a workflow sequence. The DIP will be configured to generate Workflow Ids for specific interfaces. Recipients of the initial message, and any further recipients of messages in the workflow sequence, will have the responsibility of transcribing the Workflow correlation Id from the Transaction block from the received message to the transaction block in any subsequent return messages.

Participants will also be able to track specific threads of workflows by tracking Correlation Id and MPAN via the DIP audit reports.

This is best explained with the aid of an example for BP009 – Change of Meter.

BP09 consists of two message flows; IF005 - and IF006. IF005 is the initial message, and IF-006 is the response.

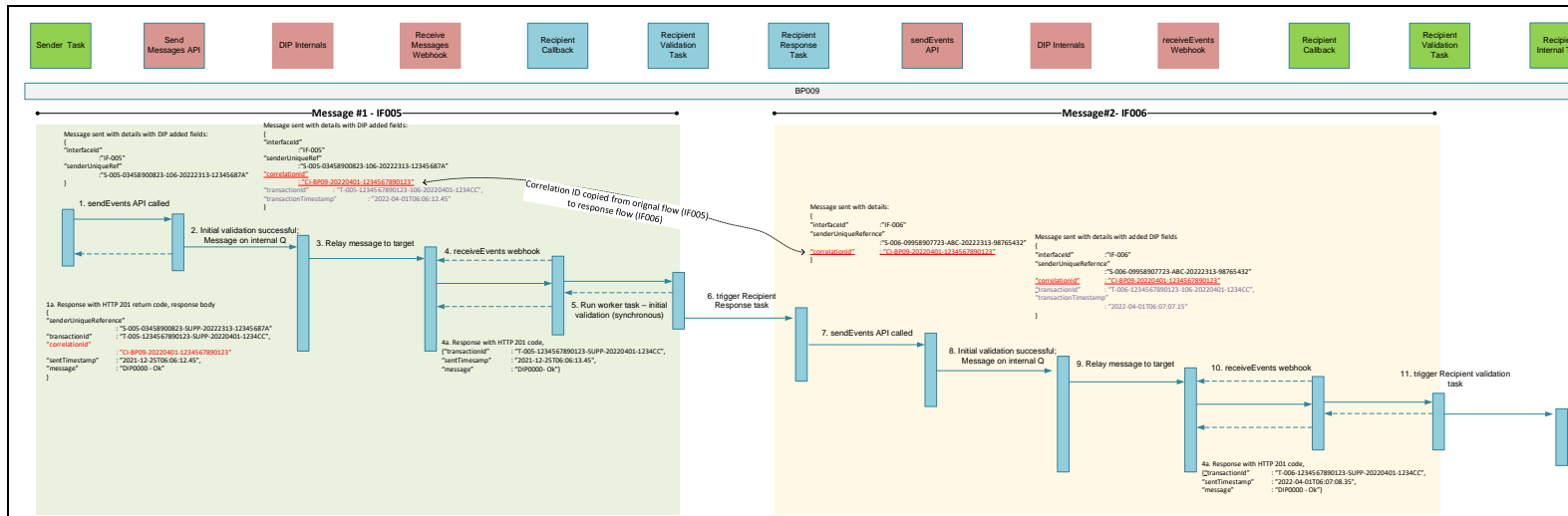


Figure 14 - Correlation Id example with IF-005 & IF-006

A worked example on this is as follows for IF-005 / 6:

1. For IF-005, a Metering Service Smart (MSS) or Metering Service Advanced (MSA) will send a message to the Registration Service, using the DIP (as defined in DES-138).
2. As part of Level 1 validation, the DIP will respond synchronously back to the MSS or MSA (as described above with a Standard Response Body Type) and this will contain the Correlation ID (DT-011). This will only be populated for a subset of messages as detailed in DES-138 (Correlation ID Created - Routing Rules section for each interface). The MSS / MSA will need to store this "Correlation ID".
3. The DIP will (also) add the Correlation ID to block D0 and send PUB-005 to the Registration Service with the added information (in the common blocks), as well as the information in the original messages (in the common and custom blocks). The Registration Service (in this example) will also need to store this "Correlation ID".

4. At this point in time, both the MSS / MSA and Registration Service will have / store this "Correlation ID".
5. At a future point in time, as per the process, the Registration Service will send a message, using IF-006.
6. For IF-006, the Registration Service will populate the S1 block with the sender Correlation ID (as this is a message that requires correlation). This is populated from Step 3 above (the one the Registration Service stored from IF-005). This is shown in DES-138 as COPY in the routing rules.
7. The DIP will not change the data in the S1 block, it will pass this information through as per the design. The DIP will not populate the D0 block with a new Correlation ID. This way we have 1 Correlation ID that is consistent across all related messages.
8. The DIP will send this message to the MSS / MSA (in this example) using the PUB-006 message and this will contain the Correlation ID. The MSS / MSA can look this up in their systems against the Correlation ID stored previously (as described in Step 2 above) to continue processing as per the design.

6 Message Volume and Submission Patterns

One of the design principles of the TOM is, wherever possible, to balance the exchange of messages over the day. The aim is to optimise message response times and to avoid overloading services with a bulk submission of messages that would need to be processed in a short timeframe. The majority of messages flows will not have any exclusive requirements in this area as the volumes are small and are not seen to be restrictive. However, some flows will require monitoring and requirements for managing the message flows may be required, these are described below and in the MHHS-DES001a - Functional Specification -Transaction Volumes - Appendix A v0.2 document

6.1 Half-Hourly Consumption Data (IF-021)

The Half-hourly consumption data message flow (IF-021) equates to over 90% of the TOMs messages in terms of number and volume. In addition BP005 – Data Processing, the business process that uses this flow, has a gate closure event (00:00 D+4) that could potentially mean services may push to submit their data in a short window just before the gate closure and this needs to be avoided. The proposal is to recommend some “soft” targets so ensure that the Data Services (both Smart and Advanced) submit the messages across the day in order to spread the load. The ideal pattern would seem to be that batches of several thousand meter readings in a single API transaction would be appropriate. The introduction of “soft” limits will hopefully encourage Data Services with larger portfolios to design their submission patterns to spread the load as requested, if the “soft” limits are not adhered to, and extreme submission patterns are exhibited, where for example a Data Service attempts to send all messages with the last 30 minutes before gate closure, then “hard” limits will need to be imposed and the DIP will reject messages once the limit has been reached. It is also recognised that scenarios may arise where the bulk submission of data is required, for example after an upstream issue with the Meter Data Retrieval (MDR) service collecting metering data due to a network outage, in order to meet the settlement deadlines.

The proposed “soft” limits for organisations with large portfolios will be, under normal operating conditions, i.e. where either the DIP or the SDS is not returning from an outage, the maximum number of submissions each data service is encouraged to submit in an hour is 1/6th of their portfolio size. Then to ensure not all messages are submitted within the last six hours up to midnight, no more than 1/2 of their portfolio size can be submitted in a single 6 hour period. Portfolio size will be measured by the number of distinct MPANs submitted over the IF-021 interface. A suggested definition of large portfolio will be 1 million MPANs.

If Data Services do not want to design in a capability where submission are spread throughout the day, i.e. implement soft limits, then a response to API throttling must be designed in, i.e. hard limits. Hard limits will be enforced by API throttling at the DIP interface.

7 Message Auditing

All API activity will be logged for auditing and made available for audit reporting and message repudiation. The DIP FS does present some ideas at a high-level on how the audit reporting requirements can be met, and at this stage there is no further detail than the ideas that were presented. These audit reports will be taken during the DIP design phase.

Auditing reports will enable participants to track messages for both individual messages exchanges and linked workflow messages exchanges using the following criteria:

- Message Channel Id
- Transaction Id
- Workflow Correlation Id
- Date/time range
- MPAN
- Sender
- Receiver

8 Technical Architecture

8.1 Open API Design (Swagger)

The latest definitions are hosted here <https://app.swaggerhub.com/apis/MHHSPROGRAMME>³

8.2 Privacy & Security

Please see *End-to-End Security Architecture document*.

8.3 Performance

Performance criteria for all message/event channels are defined in the *E2E Non-Functional Requirements specification*.

8.4 Connection Patterns

Standardised connection patterns will across all services with each message channel accessed via a pair of API HTTP(s) (incoming) / webhook (outgoing) endpoints over mTLS.

Inbound API

There will be a single API endpoint for each message channel; the API will receive a multiple messages comprising a standard header and a payload. Each transaction is signed within the HTTP header. Each connection will be able to transmit a number of different messages during each connection (limits will need to be specified during the design phase).

The endpoints are hosted:

```
https://api.{environment}.energydataintegrationplatform.co.uk/{version}/dip-channel/{IF-xxx}
```

{environment} will be one of the following : prod; preprod; sit; uit

{version} current API version environment specific, at present 1.1

Each connection will result in a HTTP return code that will indicate the success or otherwise of the complete transaction.

The response body of the HTTP call will deliver the Sender a transaction ID, and optionally a correlation ID, against the Sender's Unique Reference for each message.

Each party will be able to make multiple simultaneous connections with the endpoint.

Outbound Webhook

There will be a single endpoint for each publication channel. The expectation is that each receiving Participant will be served from multiple outgoing message/event queues, and messages will be queued in the order received (however FIFO is not guaranteed). The response body of the HTTP call will record the transaction ID against the success/failure of the call.

If required, participants will be able to register the same webhook subscription for each publication endpoint, or alternatively they can register different subscriptions logically on each Publication Id.

The requirement will be to have standardised connection patterns across all services. All services will be expected to present as minimum API (inbound)/webhook (outbound) HTTP interfaces with signed JSON payload and encrypted in transit with mTLS. This is the minimum requirement for all services and should not rule out the possibility of having other connections on specific services where considered appropriate, for example, the use of proprietary cloud

³ Whilst the APIs are being designed the API server and base URL defined in the API swagger definitions are only interim values. Once the final hosting arrangements for the DIP are known then these will change to the final correct values.

connectors should be considered for the high-volume interfaces, i.e., half-hourly consumption data if the DIP and the source systems are located within the same cloud platform.

8.5 Version Control

Versioning is a crucial part of API design. It gives developers the ability to improve their API without breaking the client's applications when new updates are rolled out.

Due to the complexity of the data exchange between Market Participants and the DIP being mostly in the format of the messages where minor versioning is required, the proposal is for API versioning through custom headers. However, entity versioning, where there are major changes to the API then versioning through URI path would be more suitable.

As a principle, all API definitions need to be backwardly compatible. In the situation where this does not hold, then a significant transition period must be provided for participants to move from old to new version.

8.5.1 API Versioning

API version control must adopt semantic versioning as the common standard, i.e.:

Given a version number MAJOR.MINOR.PATCH, increment the:

1. MAJOR version when you make incompatible API changes,
2. MINOR version when you add functionality in a backwards compatible manner, and
3. PATCH version when you make backwards compatible bug fixes.

Additional labels for pre-release and build metadata are available as extensions to the MAJOR.MINOR.PATCH format.

8.5.2 Message Channel Versioning

Each separate message channel has its own version number and is defined by the schemaVersion item in the payload/CommonBlock/S0, for example:

```
[
  {
    "payload": {
      "CommonBlock": {
        "S0": {
          "interfaceId": "IF-001",
          "schemaVersion": "004",
          "eventCode": "[InitialRegistration]"
        }
      }
    }
  },
]
```

Messages will only be submitted in a single version of the message. If a message channel requires an upgrade then this will happen via a controlled outage where all message ingress/egress is quiesced, the channel is then modified and then the API will only accept messages in the new format. Subsequently, if messages are submitted that align to the previous schema version then they will be rejected with a schema validation error.

At present Swagger only supports a single version for each interface. When the DIP moves into an operational phase then the swagger definitions will meet the requirements to support single version on message ingress into the DIP, and multiversion on message egress from the DIP.

Please see section 4.9 on message replay.

8.5.3 Versioning Examples

- Major version

A new major version of the API will be created when a new piece of functionality is required, or a change is required that will completely break the existing API. Under this scenario all interfaces will only have forwards looking data definitions and not support previous versions of data.

Replay facilities would support both old & new data definitions (see below).

- Minor version

Where a new message channel is created, then a new minor version of the API will be created. This will not require a new API to be created, however, all the corresponding interface and publications data definitions will be need to be updated to accommodate the new channel.

Replay facilities would support both old & new data definitions (see below).

- Patch version

Where the data definition of a single interface changes, then that will necessitate a patch version of the current version of the interface. Under 'normal' circumstances the incoming interfaces will only support the new version of the data definitions. If there is a requirement to support multiple version of the same interfaces (incoming) then a new minor version is required. In this scenario the publication of the messages will also support just the new current version. All data must have already traversed through the DIP.

Replay facilities would support both old & new data definitions (see below).

[8.5.3.1 Replay Facilities](#)

There is a requirement for the DIP message archive to be available to accommodate message replay by Market Participants. Where a message channel has been versioned to accommodate a change the message structure, the message replay will need to support all versions of the message. The schemaVersion in the message header informs. If a participant requests a message reply, it is their responsibility to ensure that all pertinent versions of the message will be accepted.

[8.5.1 Multi-version support](#)

There is a requirement for multi-version support of APIs. All new major, minor and patch versions, i.e. x+1, or Y+1, or Z+1, will be available prior to release for industry testing and potential re-qualification for major releases on a non-production environment.

It is difficult to view the type of changes that would be included in a major release, hence any statement on backward compatibility is difficult to make, however, where possible then backward API compatibility should be maintained for a short period after the roll out of a new major version.

For minor releases multi-version support will be dependent on the type of underlying change. It is expected that most will be data changes and new message channels.